

Wartime resilience in Ukrainian fortified cities

Ivano-Frankivsk as a public-
private heritage laboratory

Olha Tikhonova
Art History Department, University of Seville
Scientific expert of EFFORTS & FORTE CULTURA



ESTABLISHMENT OF BRANCH EFFORTS UA

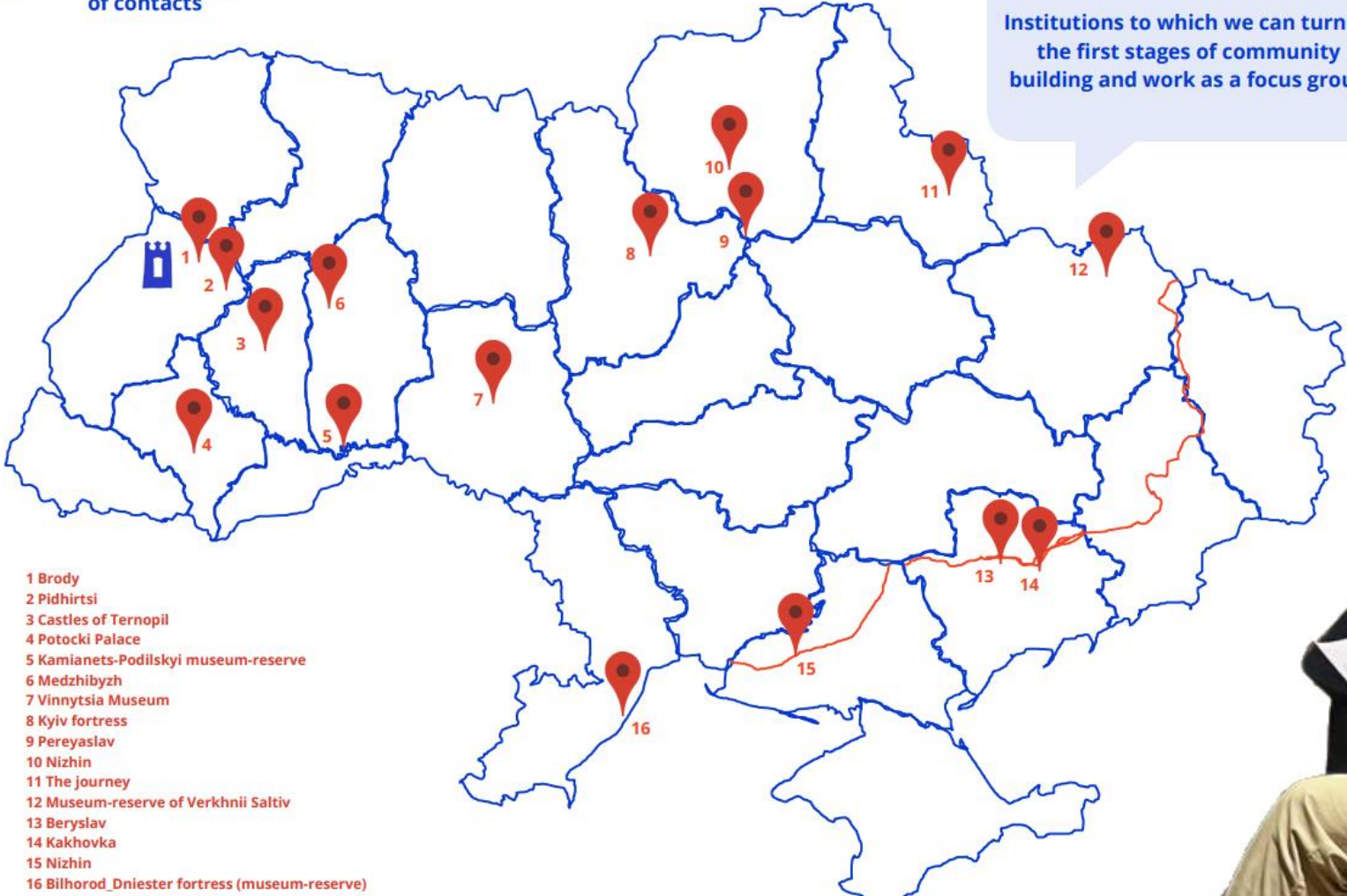
Idea in 2022.
Founded in 2024.



ESTABLISHMENT OF BRANCH

EFFORTS UA

Geography of the existing network of contacts



Institutions to which we can turn at the first stages of community building and work as a focus group

Our colleagues and acquaintances, scientists and museum experts



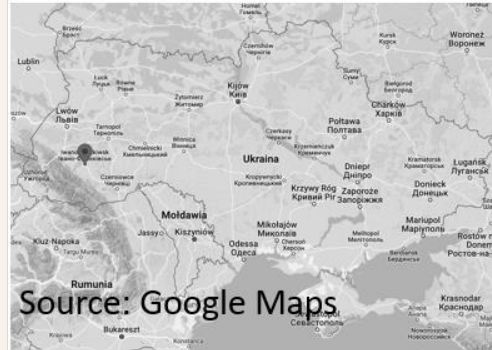
HISTORICAL FRAME

Ivano-Frankivsk: an ideal fortified city

Founded in 1662 by Andrzej Potocki. Today the fortress remains legible through fragments, maps, gates, and urban morphology.

historical frame

Watercolor image of palace made from photo

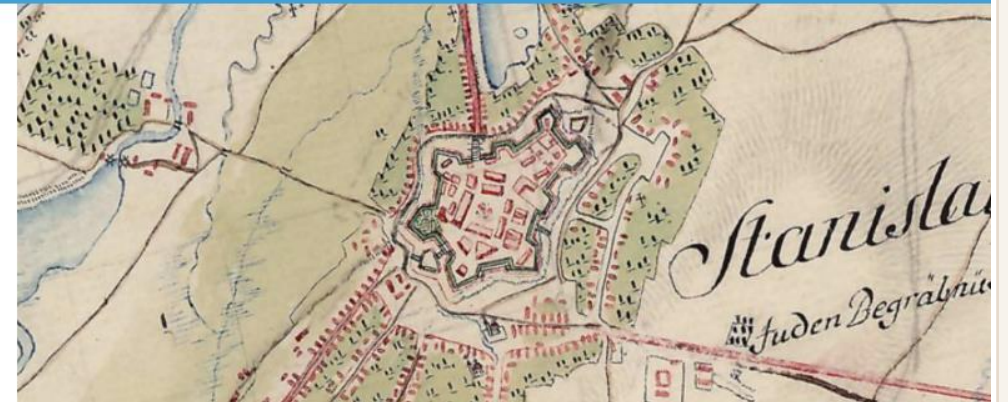


48.92180766415997,
24.71180709186649



IVANO-FRANKIVSK, 1662

Copy of plan from First
Military Survey in XVIII
century



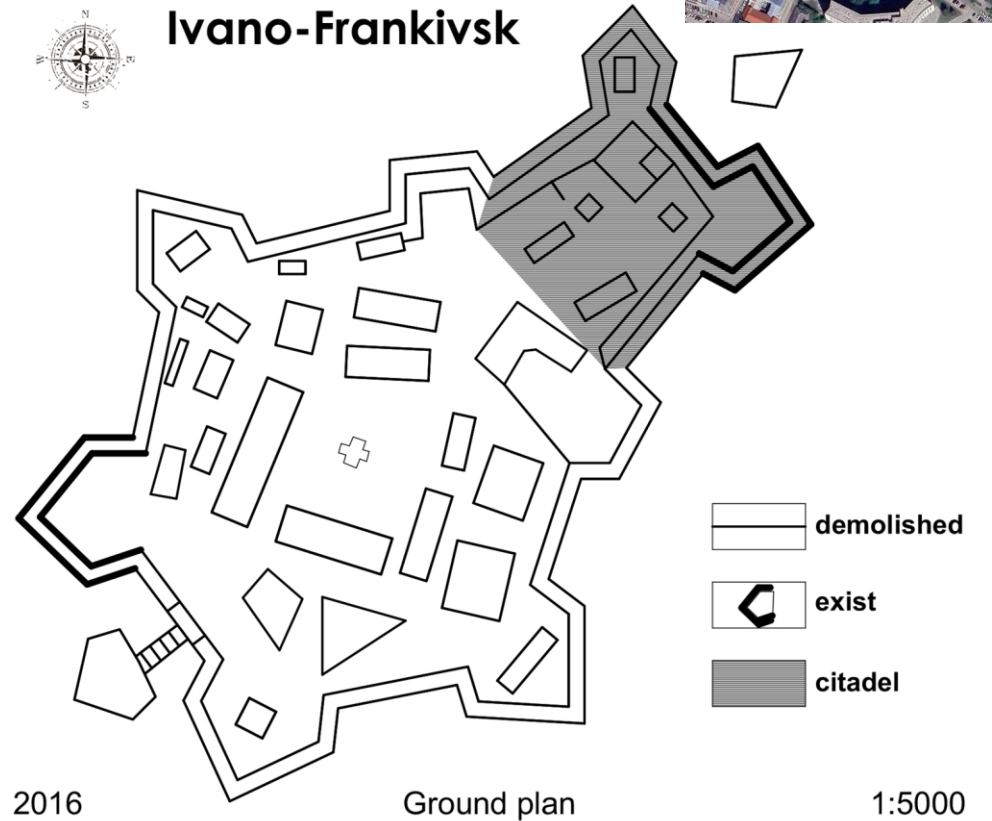
Historical maps, plan fragments, and present-day location.

URBAN PALIMPSEST

Reading the fortified city today

The contemporary city still carries the geometry of the seventeenth-century fortress.

The project reads fortified heritage as active cultural infrastructure, not as a static ruin.

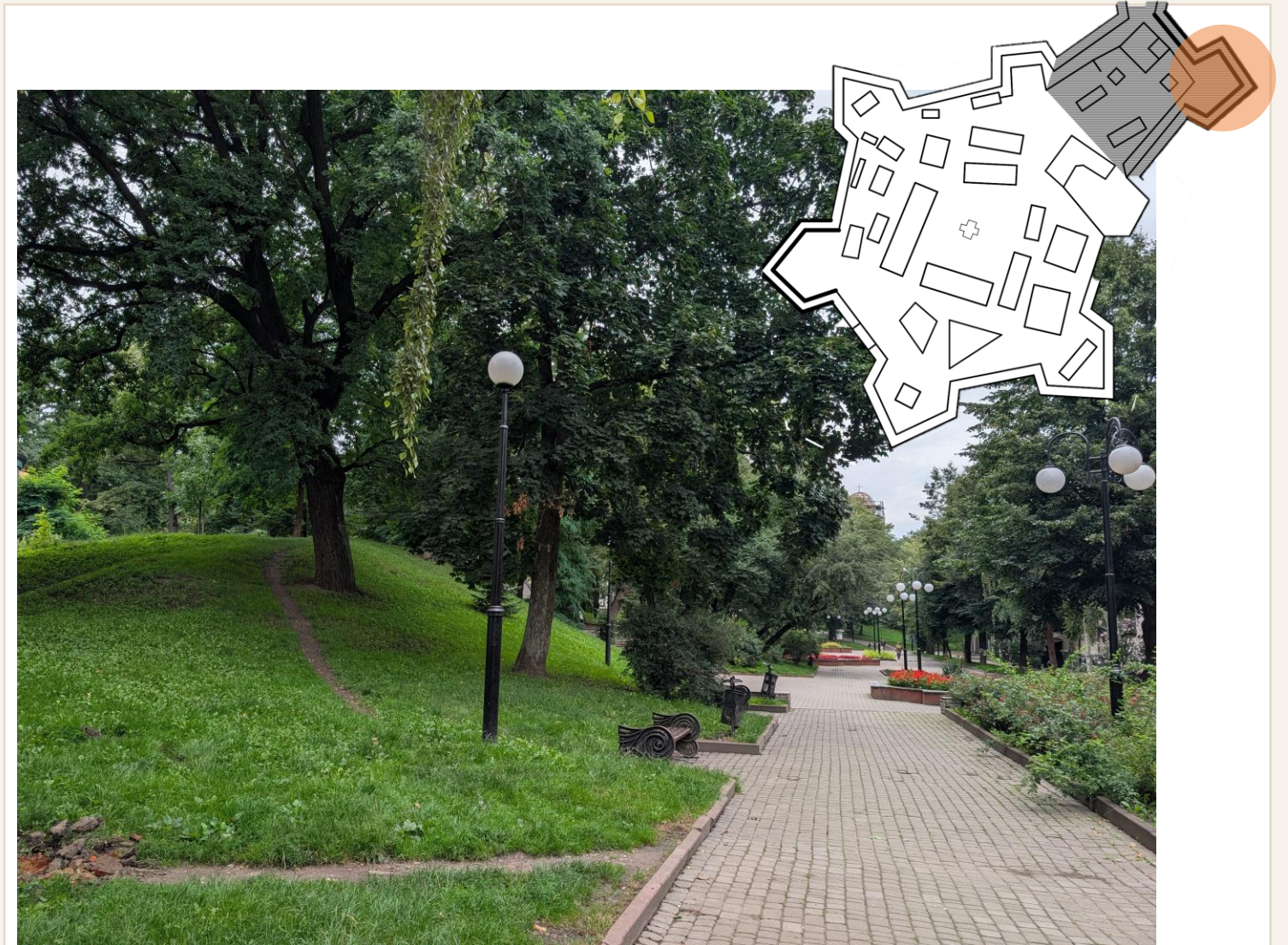


Reading the fortified city today. Source: Olha Tikhonova. Google Maps Satellite

VISUAL EVIDENCE

Fortified form and civic memory

Restored fragments make the historical perimeter visible inside everyday urban life. The fortified city becomes a framework for cultural identity and public activity.



Fortified form and civic memory. Author: Olha Tikhonova

VISUAL EVIDENCE

Fortified form and civic memory

Sites are interpreted as a network of spaces: palace, bastion, civic restaurant, galleries, workshops, and festivals.

This network supports tourism, education, local entrepreneurship, and collective memory.



Fortified form and civic memory. Author: Olha Tikhonova

CASE EVIDENCE

Restored fragments as public infrastructure

Partial restoration has already reopened parts of the fortress complex to public use. Adaptive reuse creates visible, functional reasons to maintain historic fabric.



Restored fragments as public infrastructure

Restoration already changed the site

Fortress and palace fragments have been restored and reactivated. Cultural functions now help secure attention, footfall, and legitimacy for further conservation.



Restoration already changed the site

RESEARCH CLAIM

A city-scale argument

Ivano-Frankivsk demonstrates how a fortified city can be reinhabited through cultural programming. Resilience is produced by institutions, citizens, funding models, and narratives working together.



A city-scale argument

Rehabilitation center for veterans and their families

1842 — construction of the building at the corner of the Hospital Street and Old Castle Street. Before the seminary — used for administrative functions. Since 1892 — building adapted for the Male Teachers' Seminary.



Rehabilitation centre for veterans and their families

Today it houses the 1121 Military Polyclinic with a day hospital, a state medical institution serving military personnel, veterans, war veterans, and their families.



AREAS OF REHABILITATION



MEDICAL

Treatment, surgery, prosthetics, pain management



PSYCHOLOGICAL

PTSD support, counseling, mental health programs



PHYSICAL

Physiotherapy, movement recovery, adaptive training



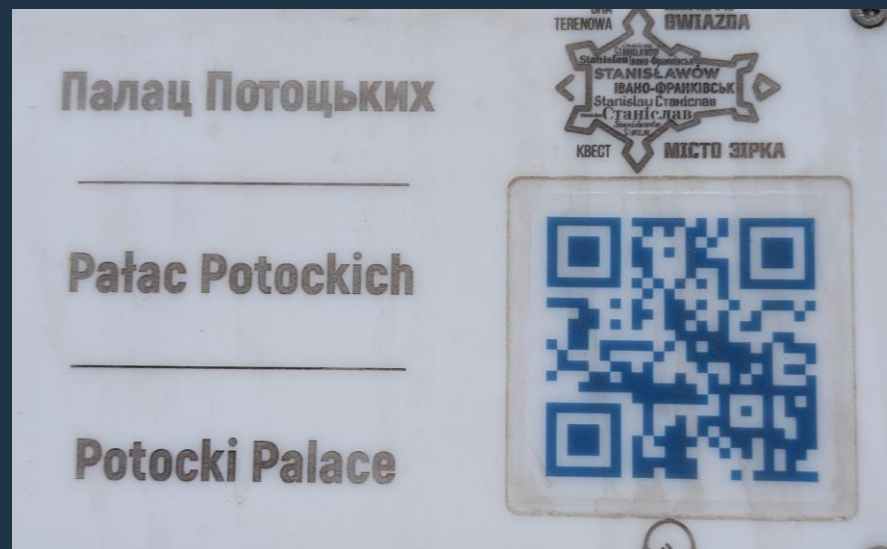
SOCIAL

Family support, community activities, peer programs

Rehabilitation of Ukrainian veterans and their families

Potocki Palace: Space of Innovative Creations

A heritage-driven hub combining museum functions with civic and cultural programming. The palace complex works as a platform for ideas, education, and urban cultural development.



ADAPTIVE REUSE

Palace complex as an open civic campus

Multiple buildings can host exhibitions, training, conferences, and cultural activity. The site is valuable because it can scale from local workshops to international cooperation.



Palace complex as an open civic campus

PROGRAMMING

From restoration site to public venue

Even before full completion, the complex functions as an active public space. Cultural use keeps unfinished restoration visible and socially relevant.

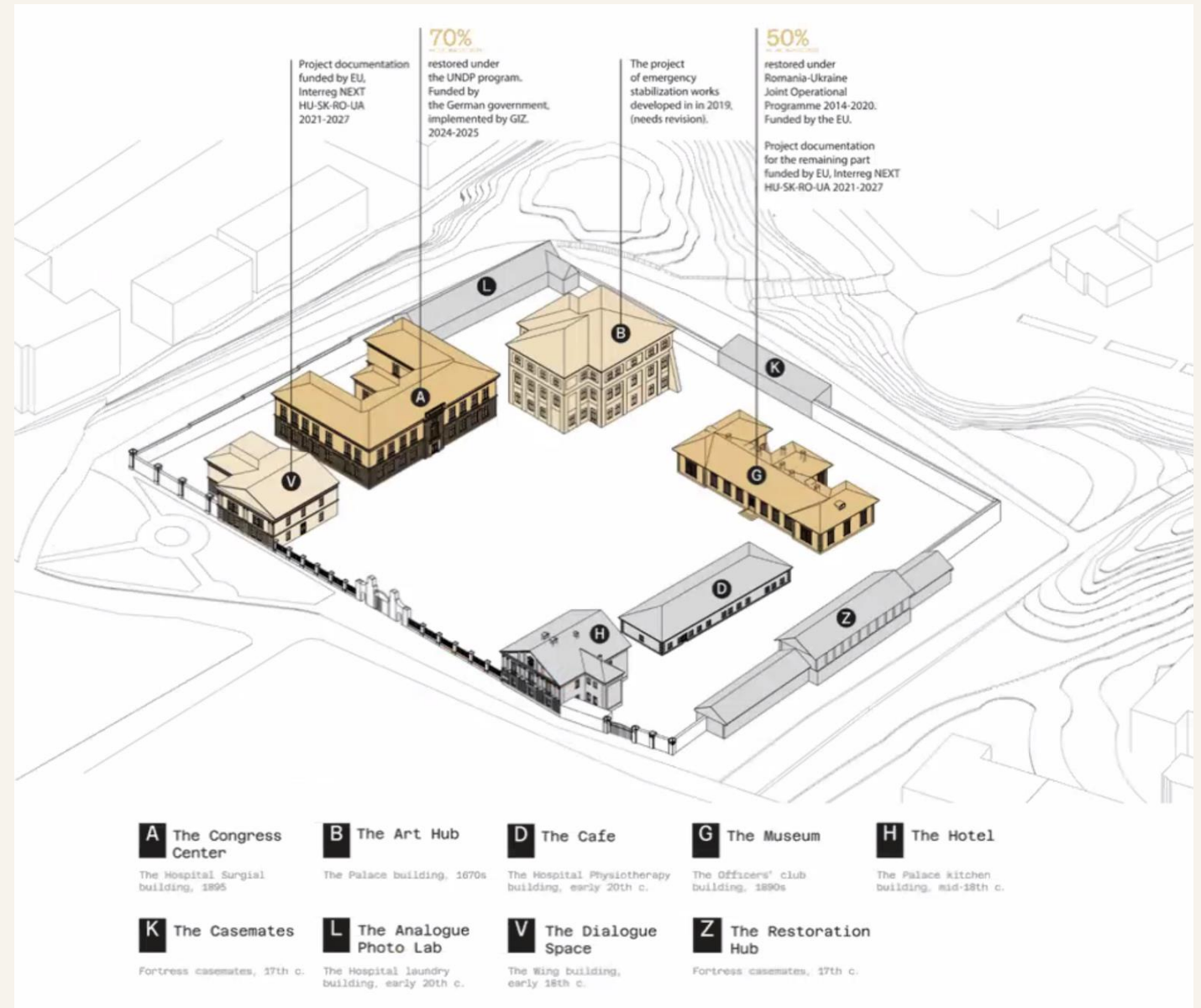


From restoration site to public venue

CONSTRAINT

Revitalization interrupted by war

The full-scale invasion suspended funding and delayed restoration work. Block A and the planned congress, museum, and functional spaces remain unfinished.



Revitalization interrupted by war

OPPORTUNITY

Unfinished spaces remain future capacity

Several buildings are still waiting for restoration investment.

The unfinished condition is also evidence of resilience: the site continues to host activity despite scarcity.



Unfinished spaces remain future capacity

International collaboration

Affiliation with EFFORTS UA connects local actors to a wider European fortified-site framework. Partnerships convert a local restoration project into a transnational heritage platform.

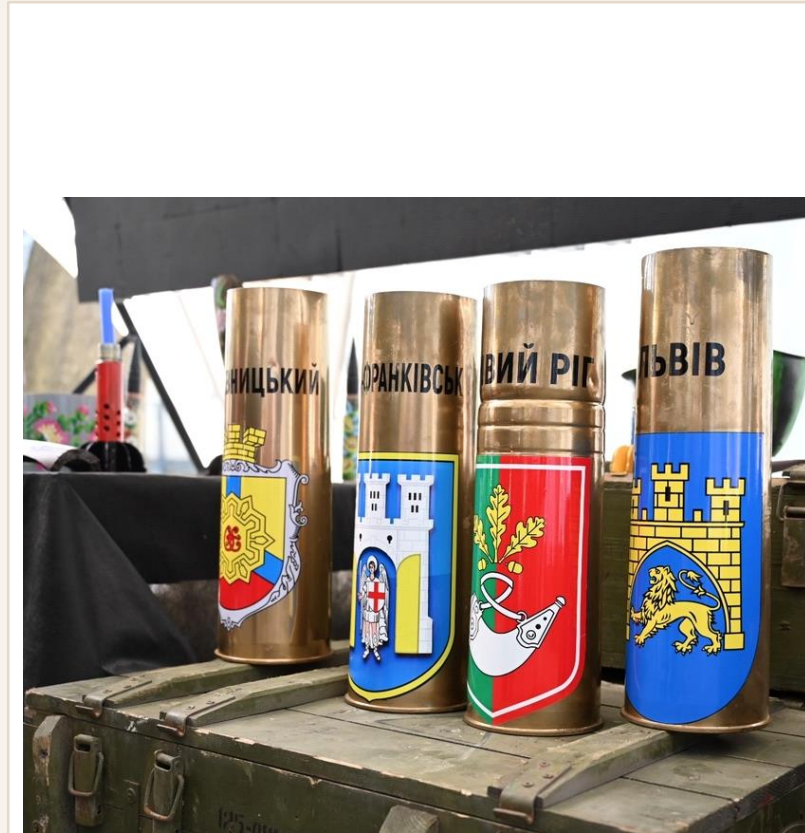


International collaboration

PUBLIC ACTION

Culture as wartime solidarity

Art workshops and auctions transform cultural production into support for the Ukrainian Army. The fortress becomes a civic space where memory, trauma, and solidarity are publicly negotiated.



Culture as wartime solidarity

Children's art and war artifacts

Students and local artists reinterpret war material through painting and charity auctions. The act of making transforms objects of destruction into symbols of survival and victory.



Children's art and war artifacts

Creative workshops as everyday resilience

Crafting and educational events create continuity in an unstable wartime context. Small-scale activities maintain the site as a living social space.



Creative workshops as everyday resilience

ACTIVATION

Local food, local economy, local identity

Food festivals, honey, spices, and craft markets connect heritage space with local producers. Commercial activity is framed as cultural infrastructure rather than generic consumption.



Local food, local economy, local identity

Dance and public gathering

Music and dance make the fortress grounds part of contemporary urban life.

The site is activated through repeated, accessible, non-specialist events.



Dance and public gathering

Heritage store and visual identity

Souvenirs and t-shirts carry the emblem of the ideal fortified city into everyday circulation. Branding turns the fortified plan into a civic symbol.



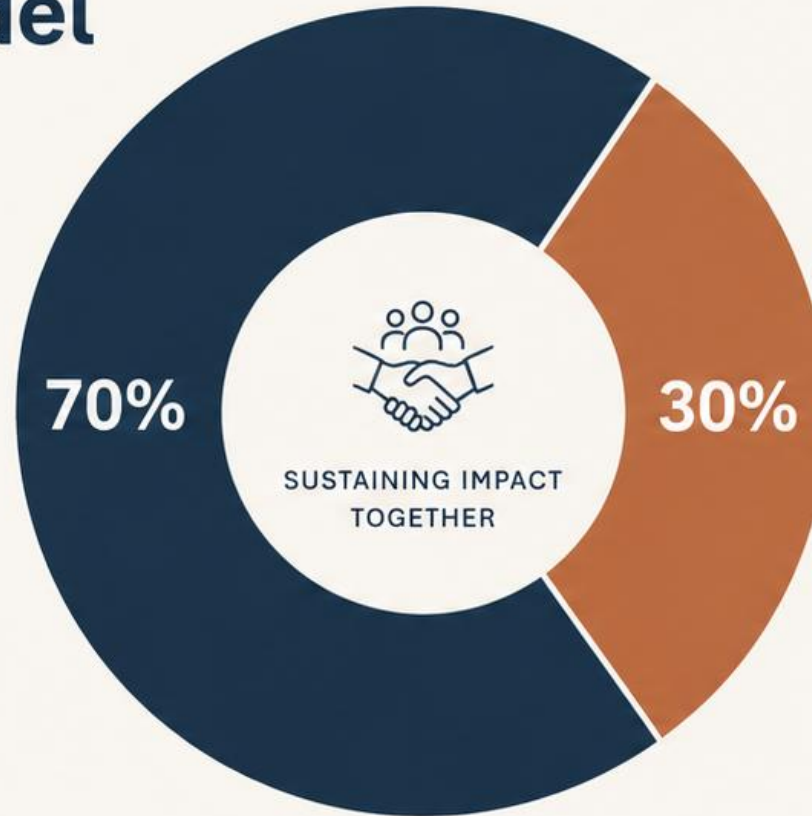
Heritage store and visual identity

Funding and management model



70% EXTERNAL FUNDING

- EU Cross-Border Programme
- UNDP
- GIZ
- Lviv Urban Lab



30% LOCAL & PRIVATE SUPPORT

- Municipal/private co-financing
- Event revenue
- Donations



Strategic partners help bridge wartime budget shortfalls.

Urban Space 100

A citizen-founded social enterprise in the historic core.

Profits are reinvested into local development and urban revitalization.



THIRD PLACE

Restaurant as civic infrastructure

Urban Space 100 combines hospitality, public debate, souvenirs, and community events. The model gives heritage-led urban development a daily social base.

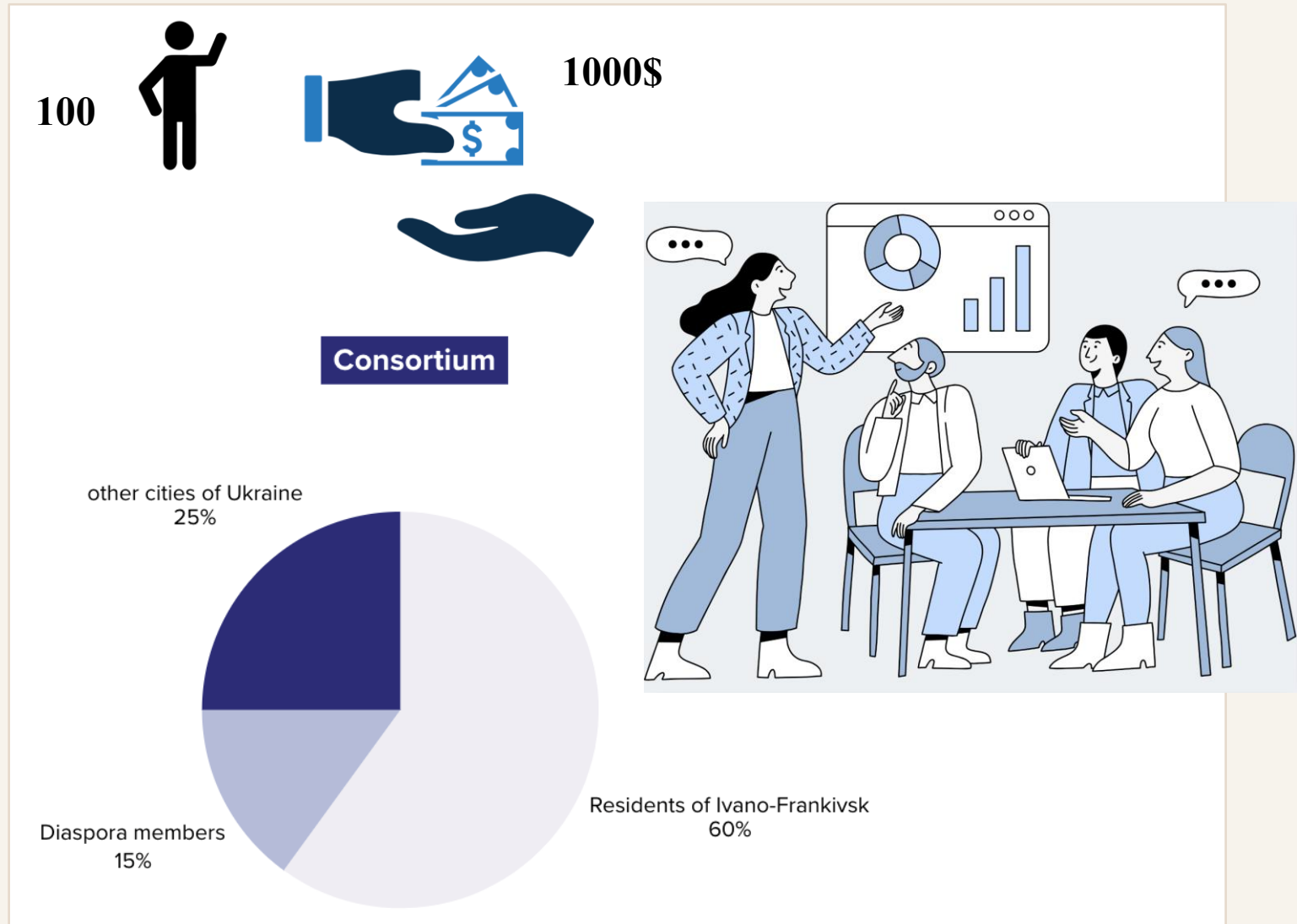


Restaurant as civic infrastructure

EVIDENCE

100 founders, \$1,000 each

A founding group of socially active citizens, professionals, and entrepreneurs created the model. Quarterly assemblies assess finances and vote on community initiatives.



EVIDENCE

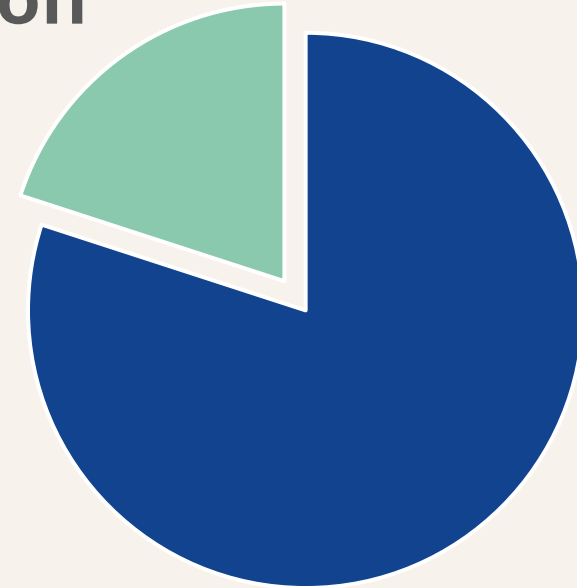
159 200 EUR reinvested

More than 178 projects funded by mid-2024.

Eighty percent of net profit goes into a transparent citizen-administered grant programme.

Profit distribution

- Grant program
- Restorant functioning



EVIDENCE

Profit distribution

80 / 20

grant programme /
restaurant operations

80% supports the grant
programme.

20% sustains professional
restaurant operations.

The split balances ethical
reinvestment with managerial
viability.



Restaurant as civic infrastructure

MICRO-HERITAGE ECONOMY

Sketching, calendars, and door restoration

A sketchbook gathering grew into a city identity project. Calendar and product sales help fund the restoration of historic doors.



Sketching, calendars, and door restoration

PUBLIC PARTICIPATION

Small formats, visible outcomes

Drawings, calendars, magnets, and social sharing make heritage participation low-threshold. The model converts attention into modest but concrete restoration income.



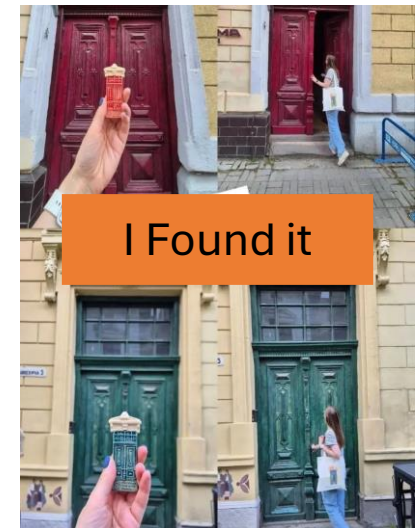
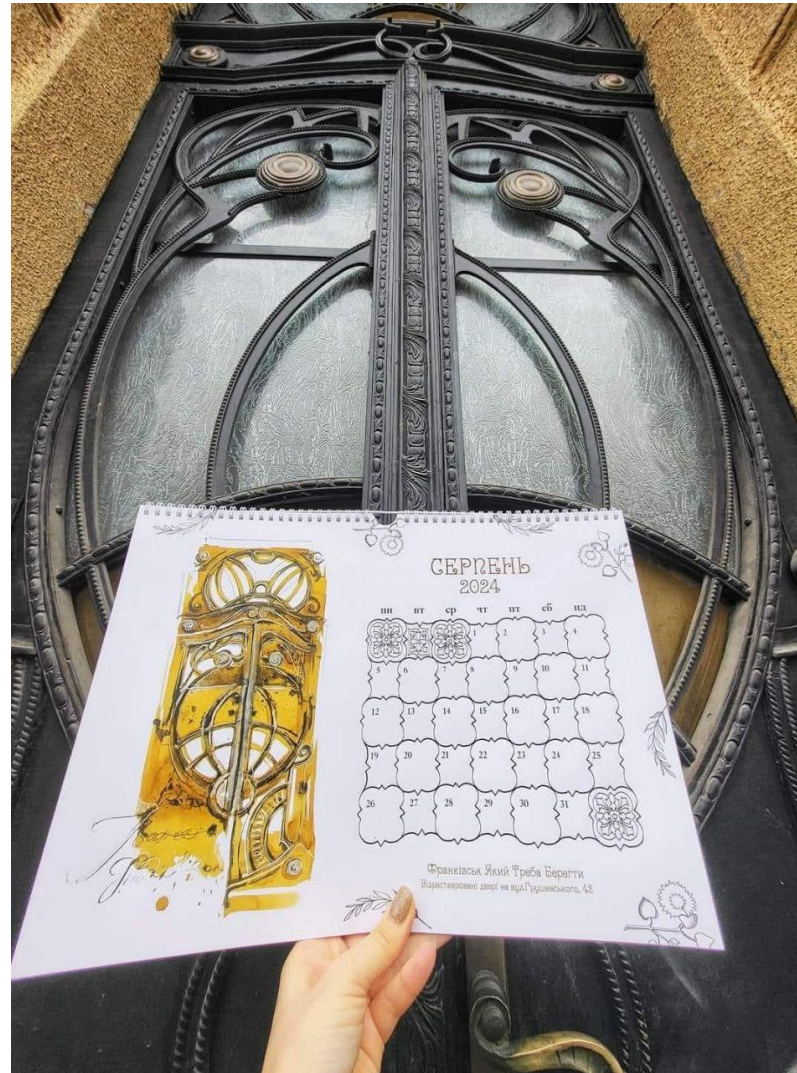
Small formats, visible outcomes

ENGAGEMENT

“I found it”: heritage as a game

Visitors can search for the drawn places and share discoveries on social media.

Playful participation makes the historic city more legible to non-specialists.



A space of peace and support

Drawing in a friendly environment helps people continue daily life while relatives are at war.

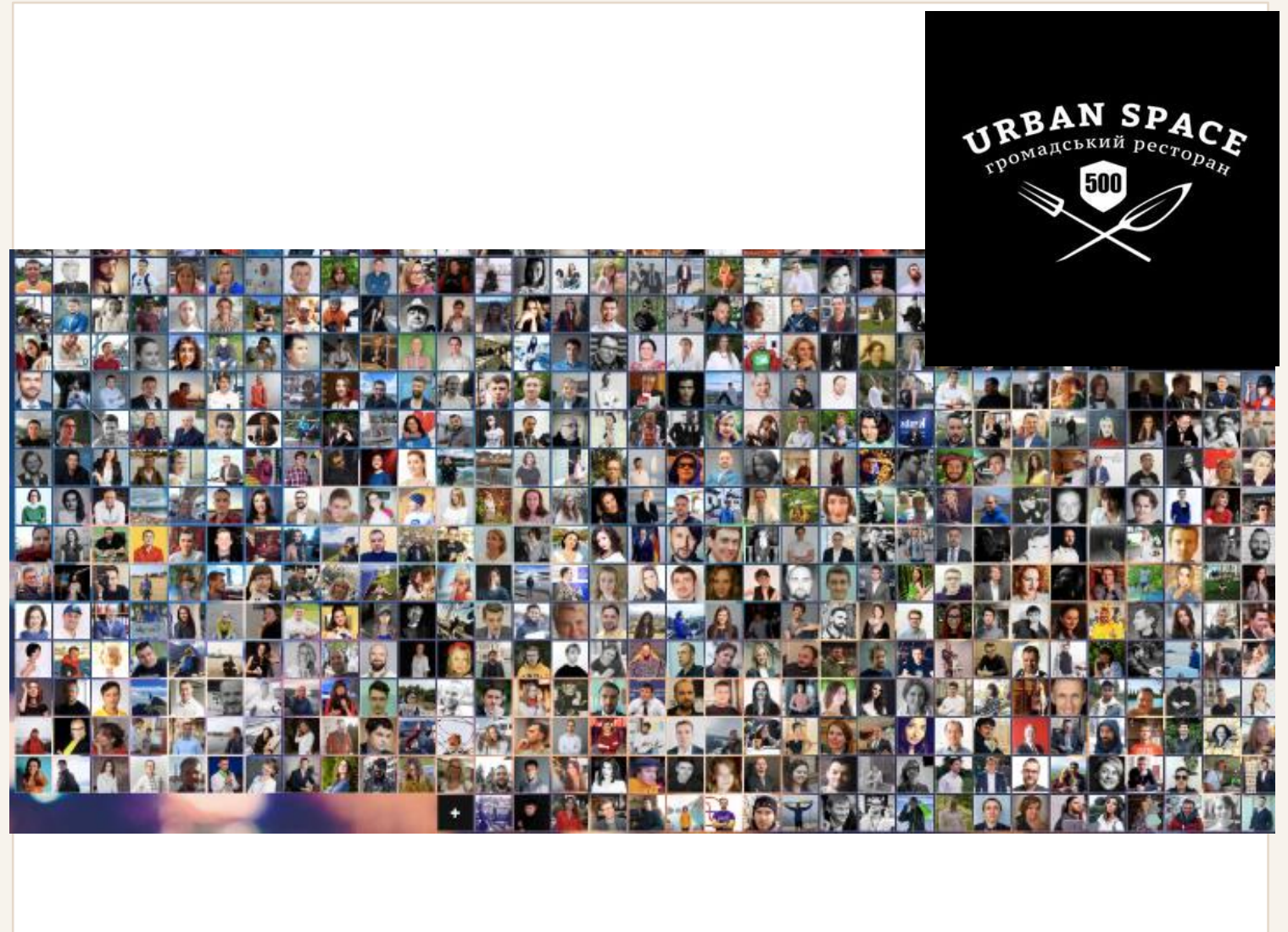
The civic value is emotional as well as economic.



A space of peace and support

A replicable model

The Urban Space model inspired over 250 replication inquiries. Urban Space 500 in Kyiv demonstrates transferability to larger civic networks. The approach suggests social franchising for post-industrial and post-conflict cities.



A replicable model

Bastion Fortress Gallery

A restored section of seventeenth-century fortifications adapted as a cultural and commercial hub.

The gallery makes the material fortress visible, usable, and economically active.



SPATIAL ADAPTATION

Plan and terrace old structure, new use

The restored bastion integrates historic walls with contemporary terrace and gallery functions. The plan clarifies how public use occupies the fortified fragment.

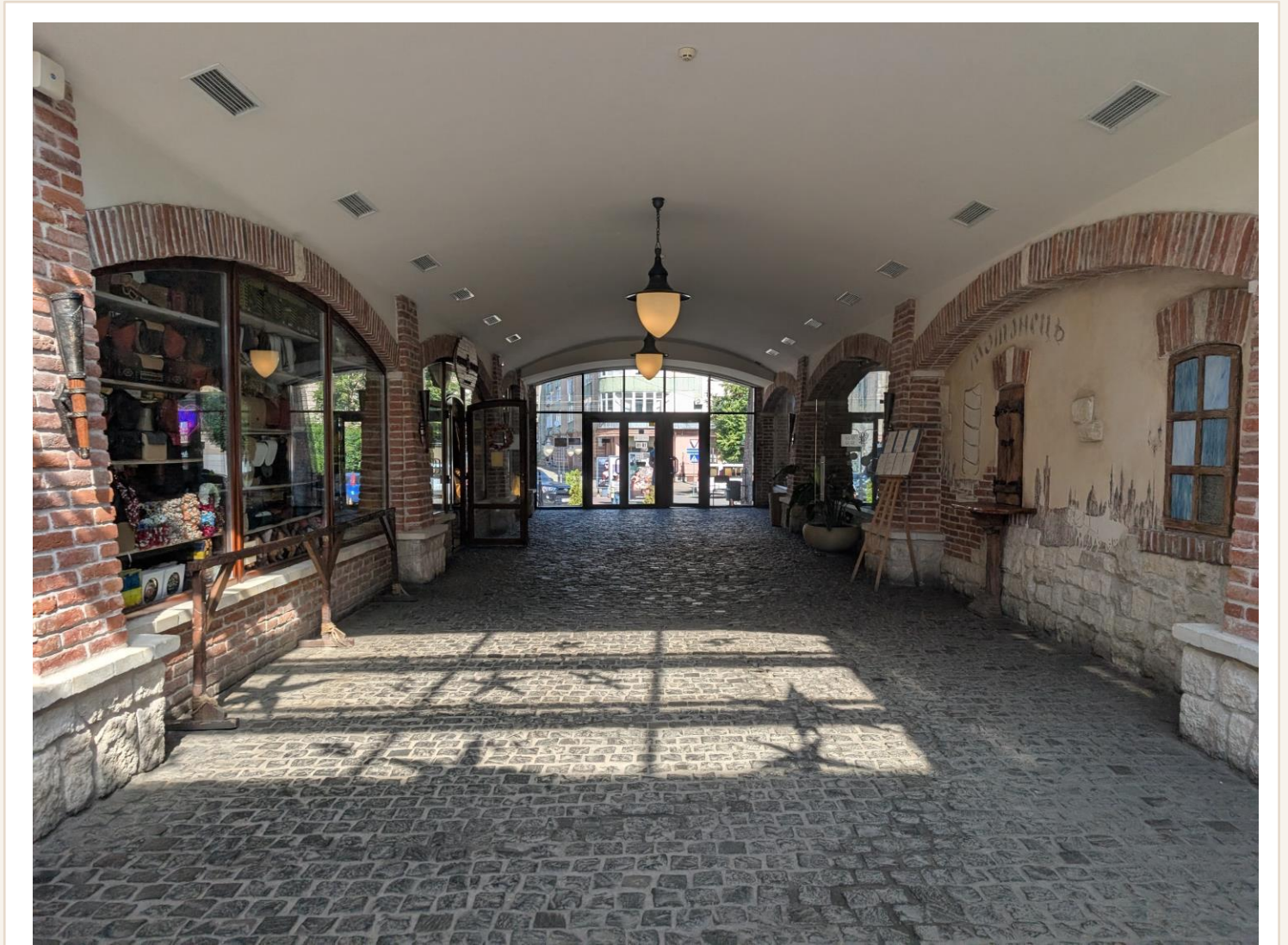


Plan and terrace: old structure, new use

Interior of the Bastion Gallery

Casemate-like spaces now host craft shops, cafés, and creative businesses.

The interior keeps historic fabric readable while enabling daily use.



Interior of the Bastion Gallery

Walls as exhibition infrastructure

The bastion walls serve as a rotating art gallery.

Craft festivals and exhibitions expand the site beyond conventional monument visitation.



Walls as exhibition infrastructure

LOCAL CRAFTS

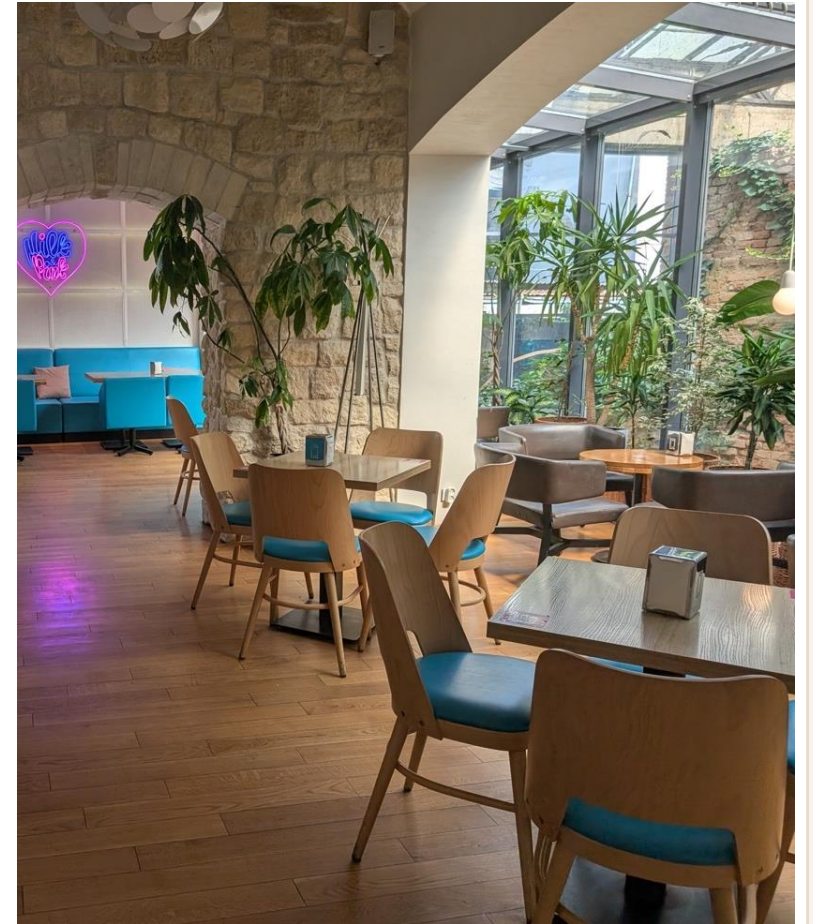
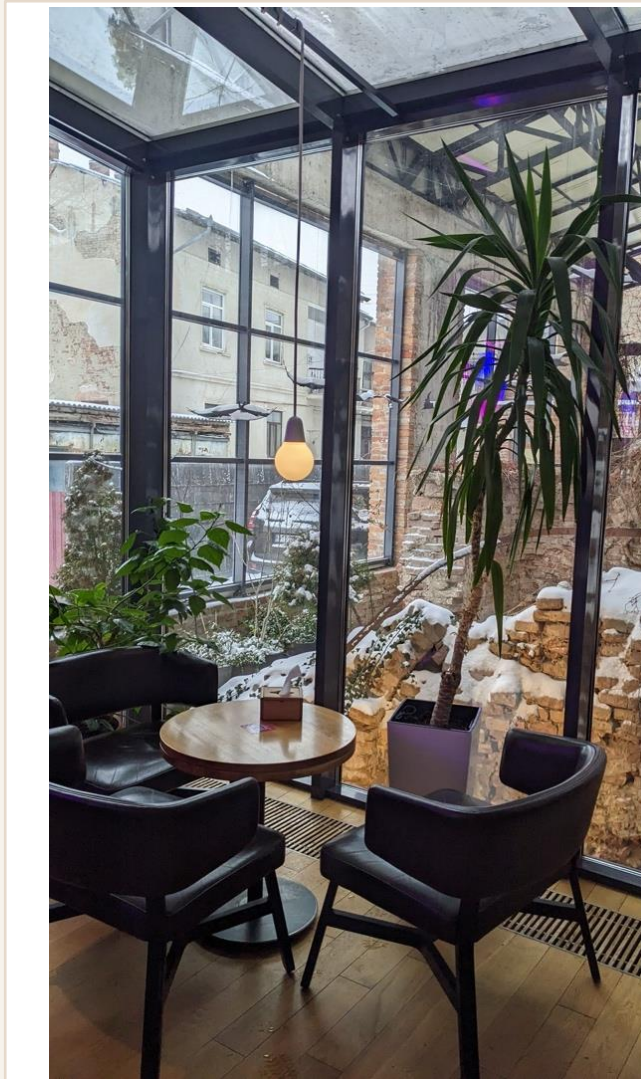
Etno Style boutique

Regional ceramics, clothing, jewelry, and souvenirs root commerce in local material culture. The gallery supports craft economies inside a fortified heritage setting.



Milk Pink café

A café turns the bastion into a social space where visitors sit within the historic fortification. Views toward preserved remnants connect daily life to urban memory.



Milk Pink café

INTERPRETATION

Visible remnants in contemporary glass

Old walls and casemates are preserved within transparent structures.

The display allows the public to read the fortifications from both inside and outside.



Visible remnants in contemporary glass

CONCLUSION

Findings: resilience through culture

