

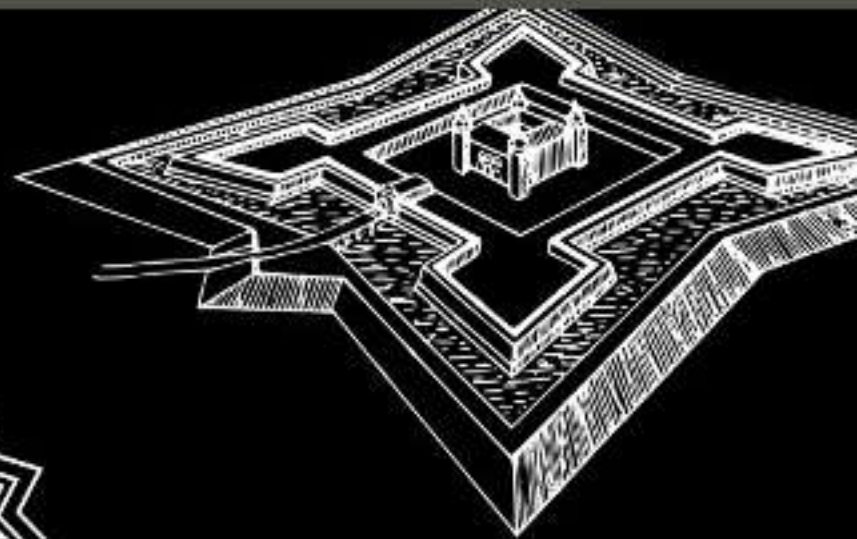
Bastion fortification heritage in Ukraine

Presenter: OLHA TIKHONOVA,
PHD in Architecture

PAS
IFIC



IH
PAN





“If you can film an idea in your mind, follow that film idea shot for shot, scene for scene, that idea is worth making.
- CRAIG MAPP

Different types of fortified palaces

PIDHIRTSI



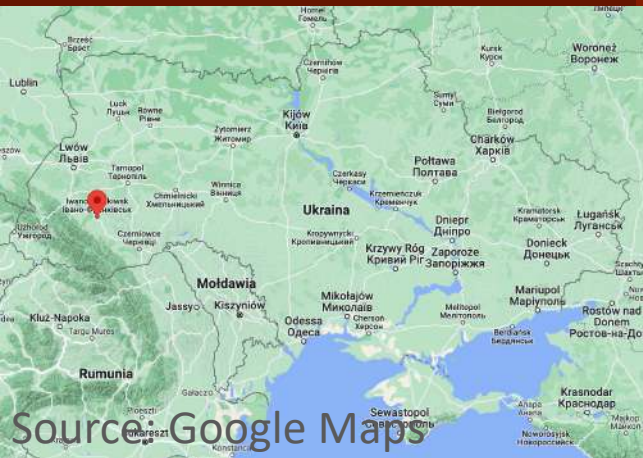
ZOLOCHIV



Typology

Source: google photos

Watercolor image of
palace made from
photo



48.92180766415997,
24.71180709186649

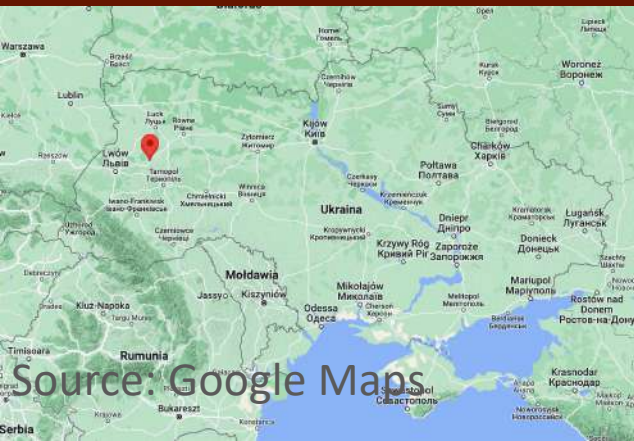
IVANO-FRANKIVSK

Preserved curtains of palace fortification wall



Source: Author's photos

Watercolor image of
palace made from
photo

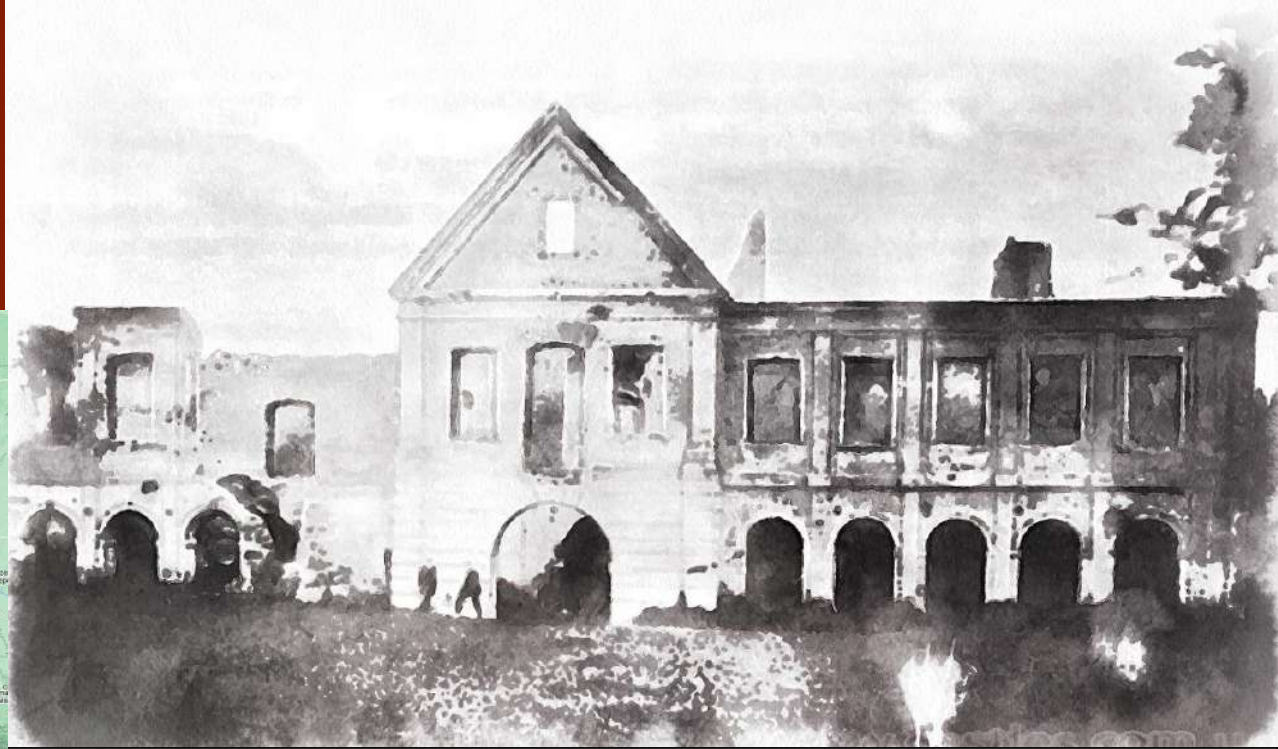
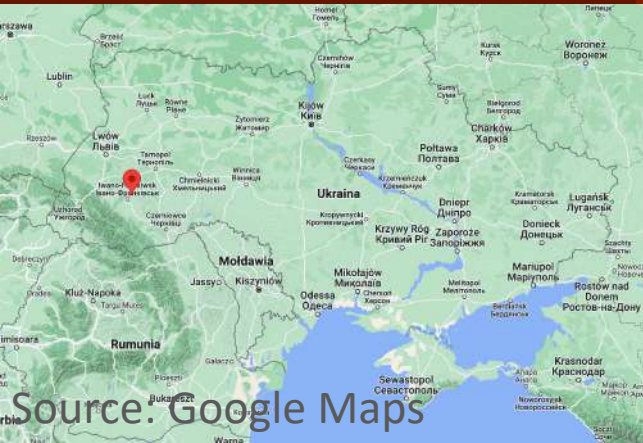


Source: Google Maps

50.087850700124015,
25.13673880392461

BRODY

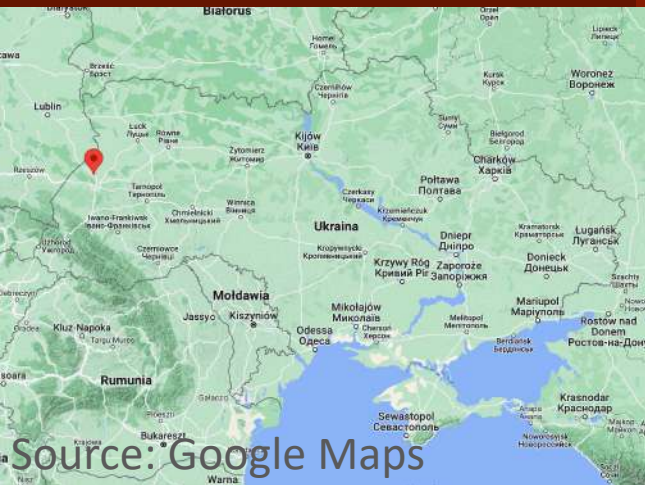
Watercolor image of palace made from old photo



49.0341255326902,
24.85155031080312

MARIAMPIL

Watercolor image of palace



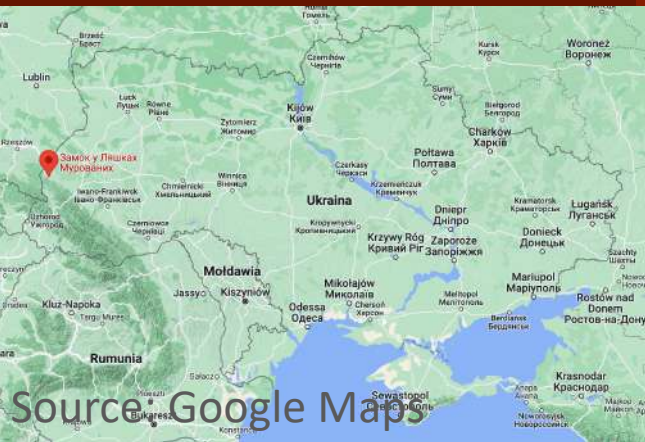
Source: Google Maps



50.12284348886503,
23.96554930662621

ZHOVKVA

Watercolor image of
palace remains



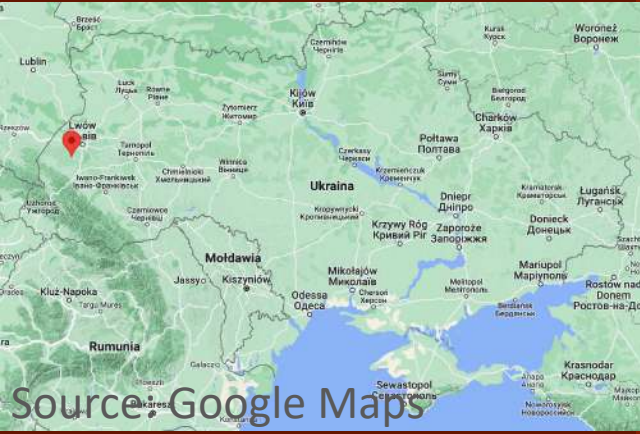
49.52563719549638,
22.93888806597089

MUROVANE (D. SAMBIR)

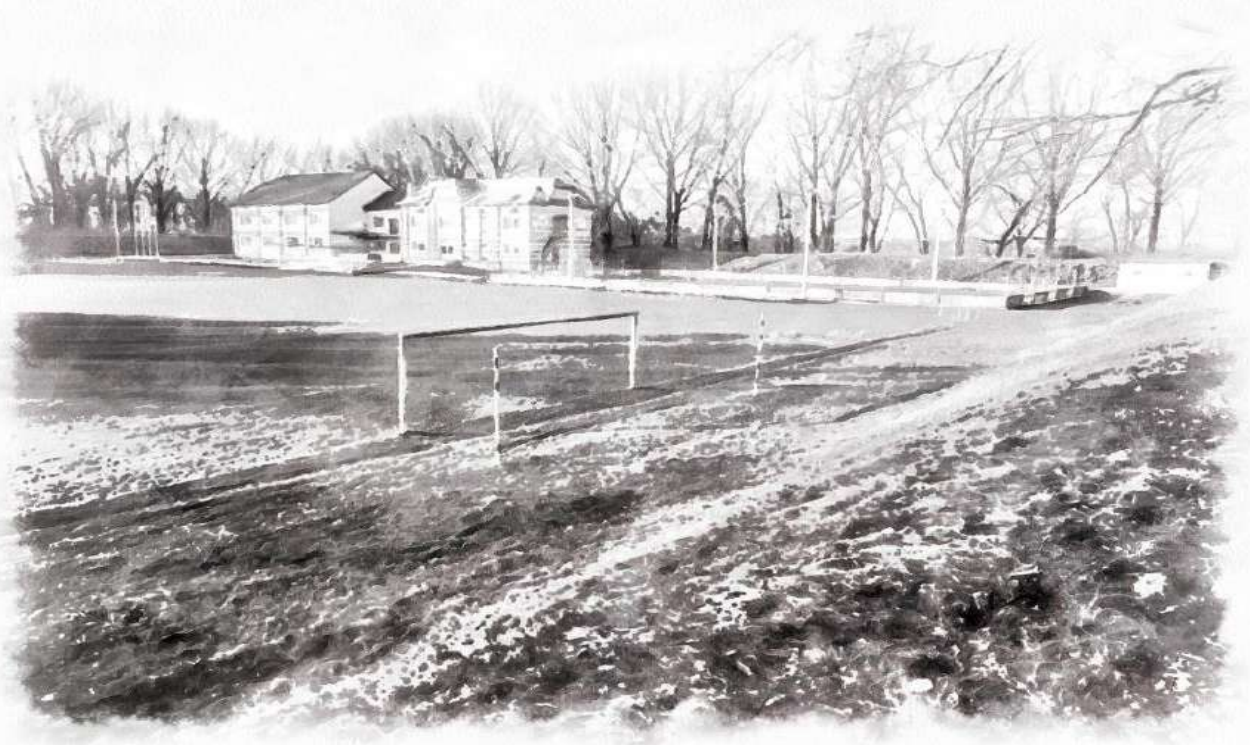


Current situation
Source: author's work

Watercolor image of
palace remains

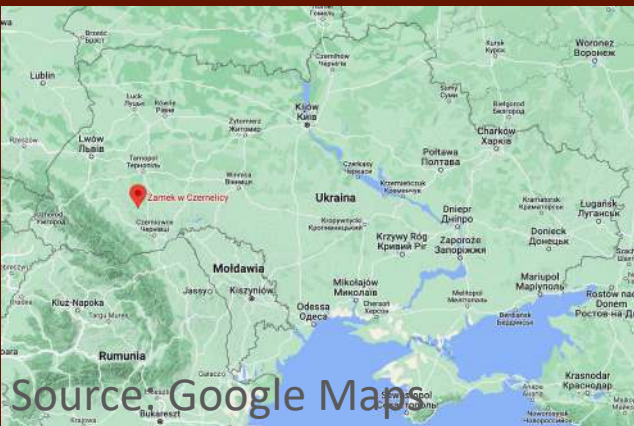


49°37'44.92"N,
23°40'42.82"E



KOMARNO

Watercolor image of
palace made from old
photo



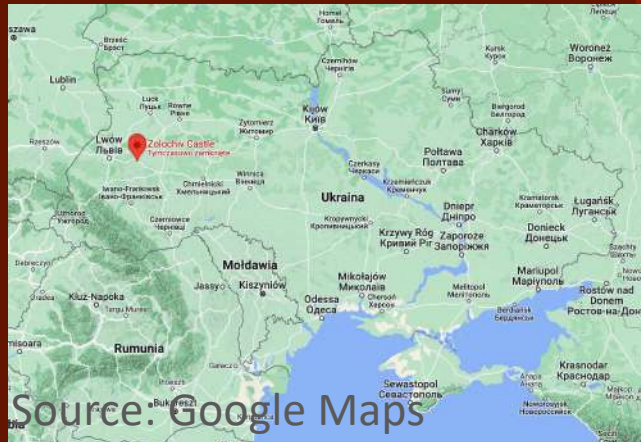
Source Google Maps



48.8227003632481,
25.422830952506974

CHERNELYTSIA

Watercolor image of palace

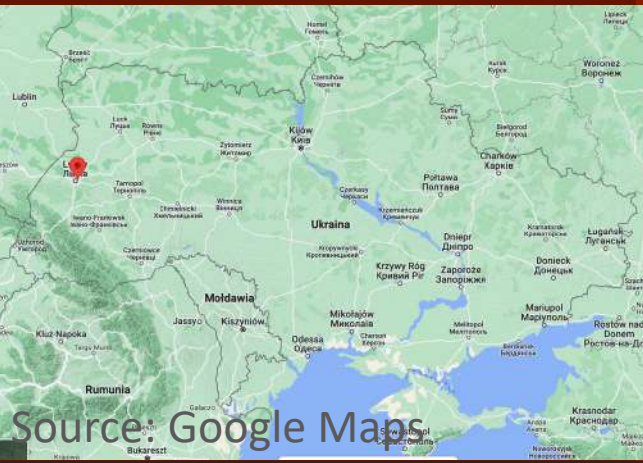
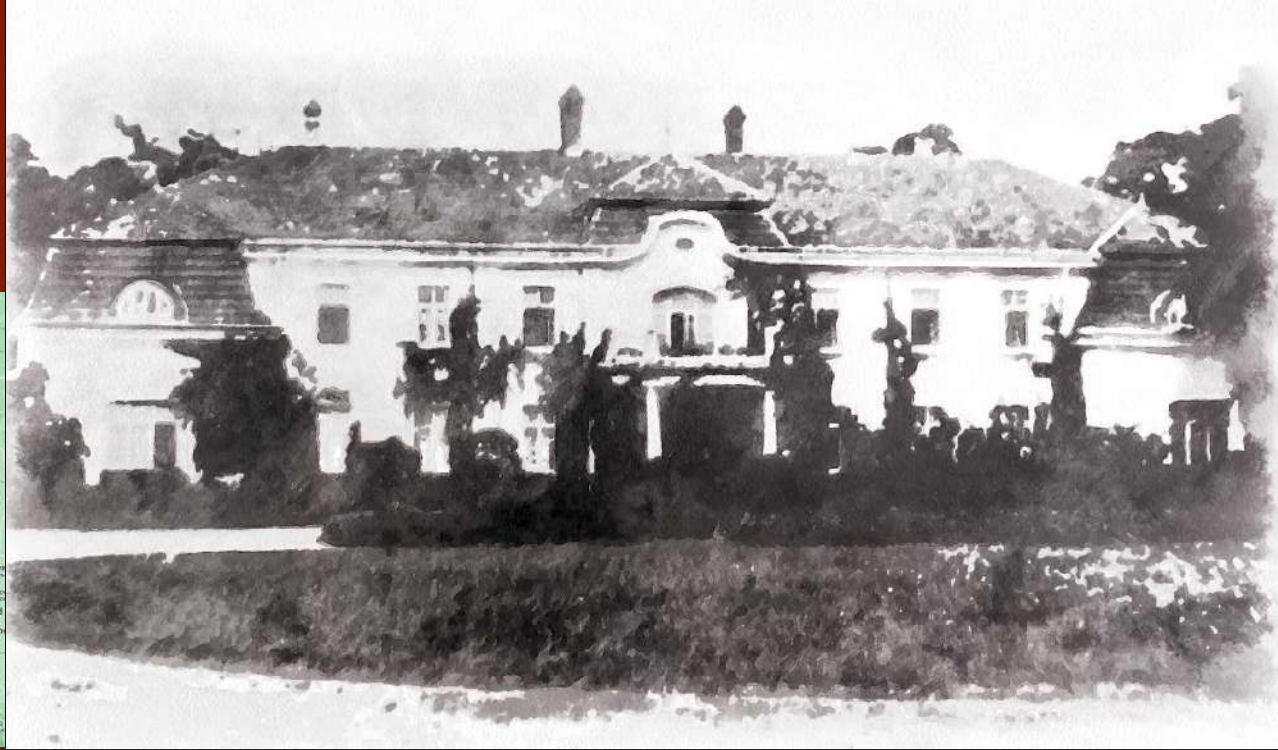


Source: Google Maps

49.8020246997767,
24.9064511155625

ZOLOCHIV

Watercolor image of palace from old photo



Source: Google Maps

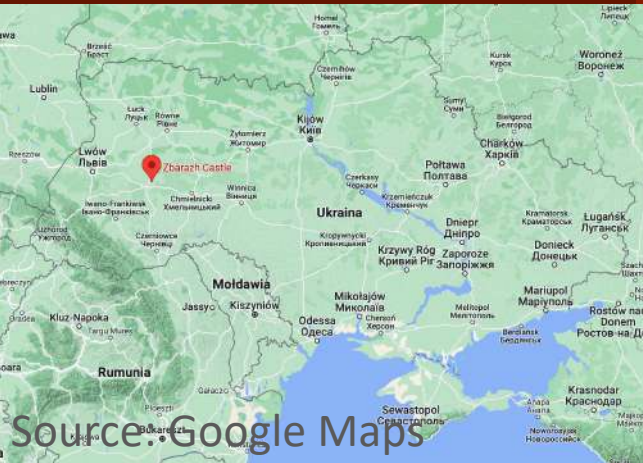
49°52'38.9"N 24°06'04.9"E

MUROVANE (D. PUSTOMYTY)



Current situation
Source: author's work

Watercolor image of palace



Source: Google Maps

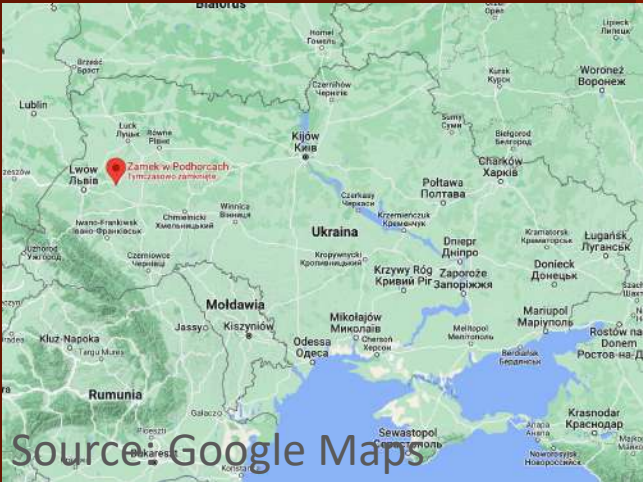
49.6633189684558,
25.785535873230128

ZBARAZH



Zbarazh. Plan of the castle and additional line of defense with Military earthworks(Source: (Pilarczyk, 1997, fig. 318)).

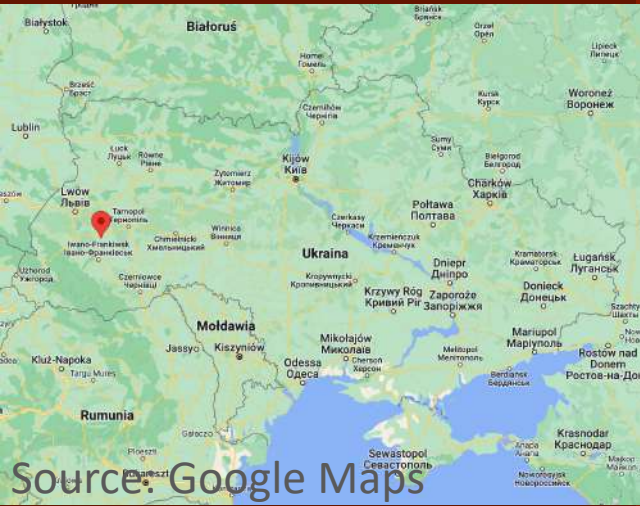
Watercolor image of
palace



49.94311296999869,
24.98354044070179

PIDHIRTSI

Watercolor image of remains



49.351877348482255,
24.77259251575767

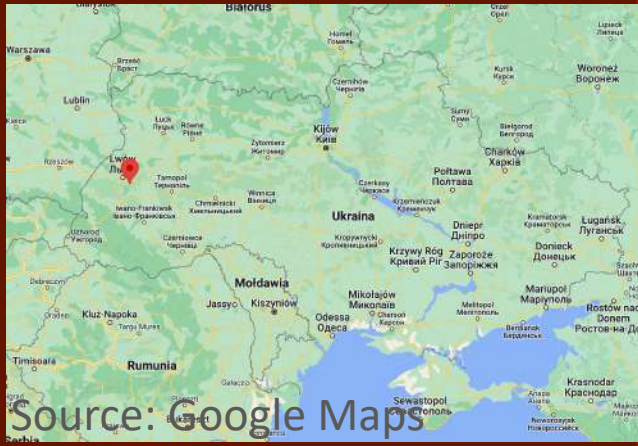
VERKHNIA LYPYTSIA



AERIAL PHOTO

Current situation Verkhnia Lypytsia
Source: author's work

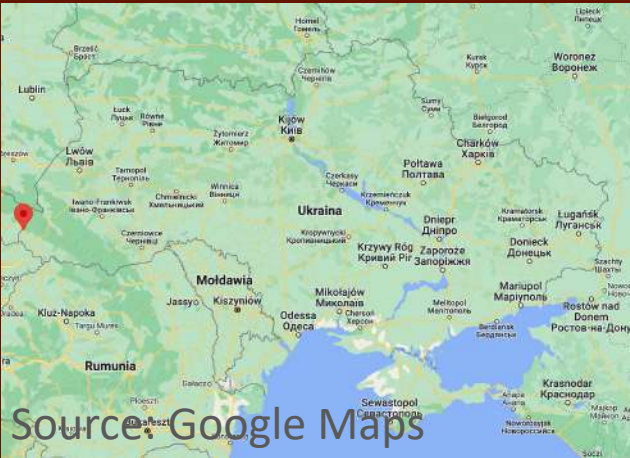
Photos



Source: Google Maps

49.73219814812794,
24.24450840268234

ZVENYGOROD



Source: Google Maps

48.62229802011956,
22.306444613157208

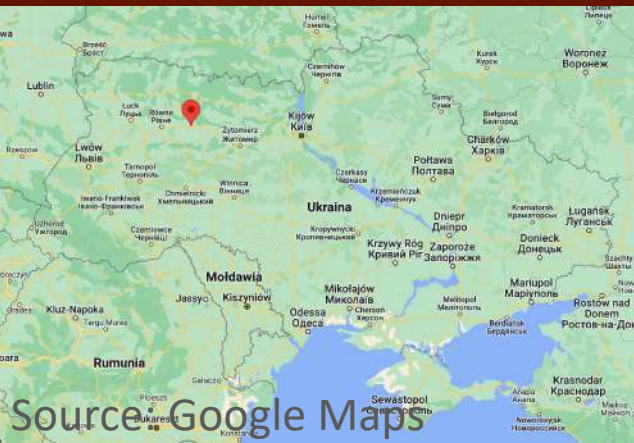
UZHGOROD (Zakarpatska Region)

Sources:
<https://pl.pinterest.com/pin/315322411389709514/>

<https://www.wykop.pl/wpis/16319619/za-mek-w-uzhorodzie-na-ukrainie-ciekawostkihistoryc/>



Photos



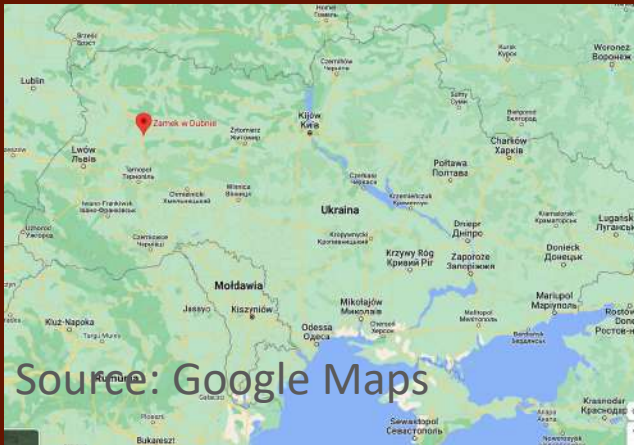
50.61728180913275,
27.15676224973511

Korets (Rivne Region)

Source:
<https://history.rayon.in.ua/news/2465>
21-u-feisbutsi-opublikovali-maliunok-koretskogo-zamku



Photo



Source: Google Maps

50.427343592638195,
25.756595481700835

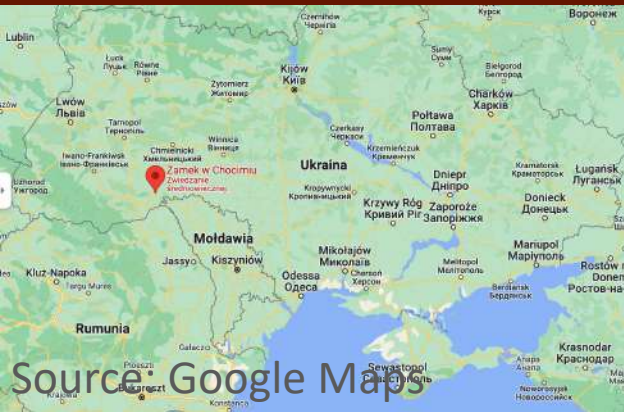
Фото Олександра Білого

Source:
<https://zamokdubno.com.ua/excursions/>

DUBNO (Rivne Region)



Photos



Source: Google Maps

48.52200007320065,
26.49840424274925

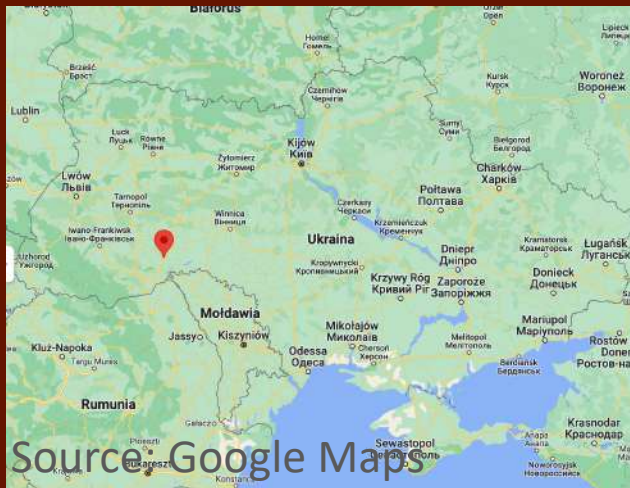


CHOTYN (Chernivtsi Region)



CONTACT:
mykola.v.bezv@lpnu.ua

Prof. Mykola Bezv



KAMIANETS-PODILSKYI (Khmelnyska Region)

48.6794915519847,
26.5613802026806

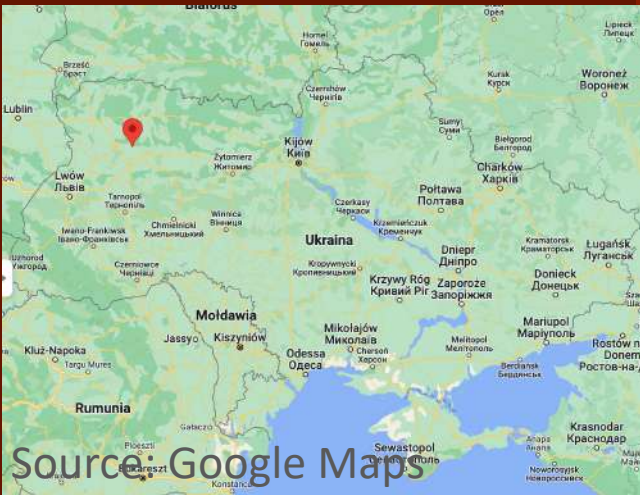
Photo

Source:
<https://ukrainetrek.com/blog/architect-ure/kamianets-podilskyi-castle-one-of-the-seven-wonders-of-ukraine/>

Wiki



Photos



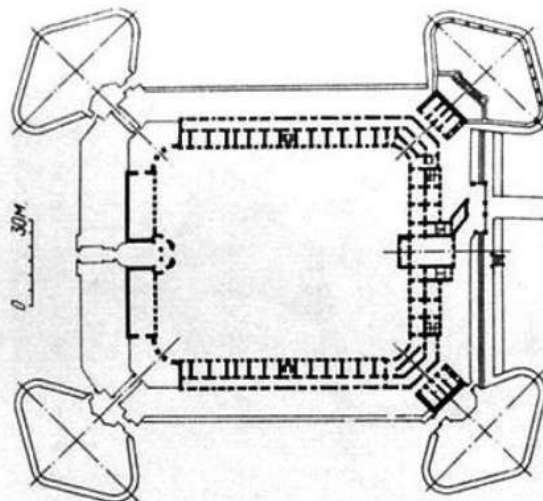
© Дмитрий Следюк
painter12@mail.ru

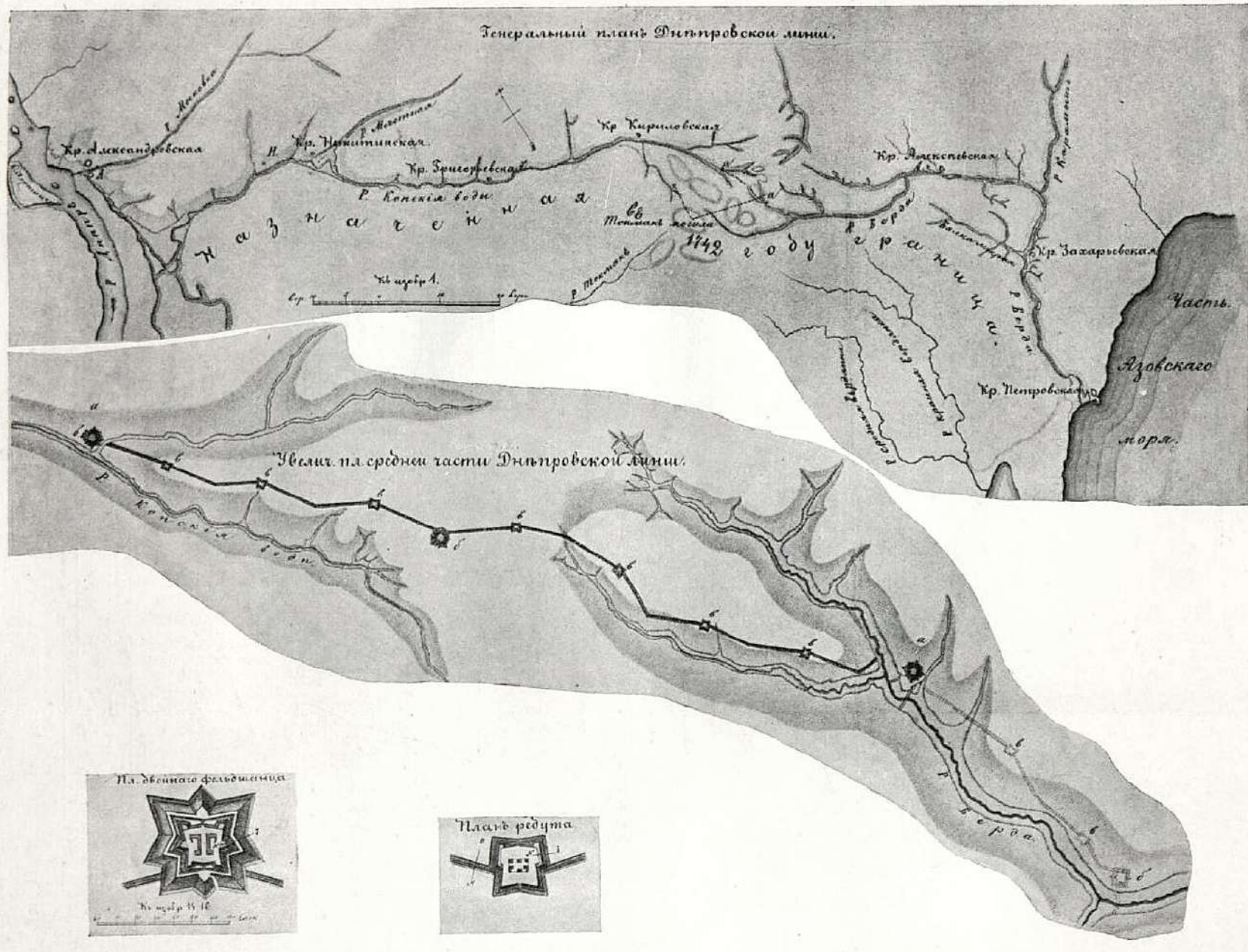
50.72341589363576,
25.808566384658427

OLYKA (Volyn Region)

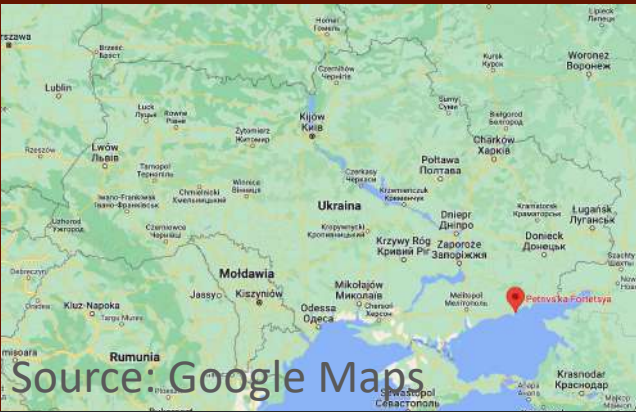
Plan

Source:
https://uk.wikipedia.org/wiki/%D0%9E%D0%BB%D0%B8%D1%86%D1%8C%D0%BA%D0%B8%D0%B9_%D0%B7%D0%B0%D0%BC%D0%BE%D0%BA#/media/%D0%A4%D0%B0%D0%B9%D0%BB:%D0%9F%D0%BB%D0%B0%D0%BD_%D0%9E%D0%BB%D0%B8%D1%86%D1%8C%D0%BA%D0%BE%D0%B3%D0%BE_%D0%B7%D0%B0%D0%BC%D0%BA%D1%83.jpg

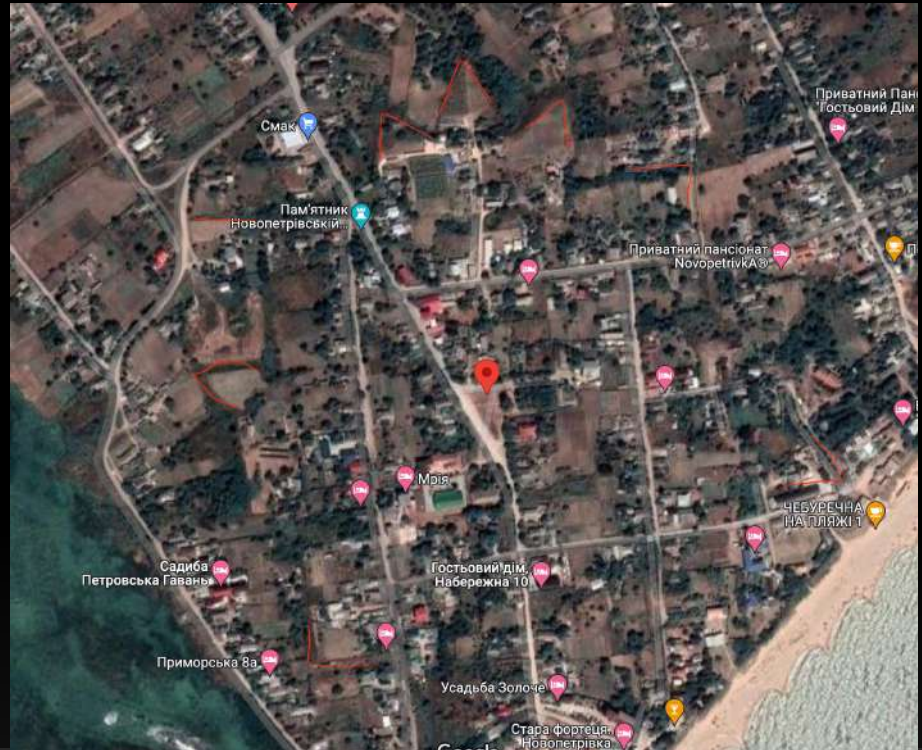




Satellite view



Source: Google Maps

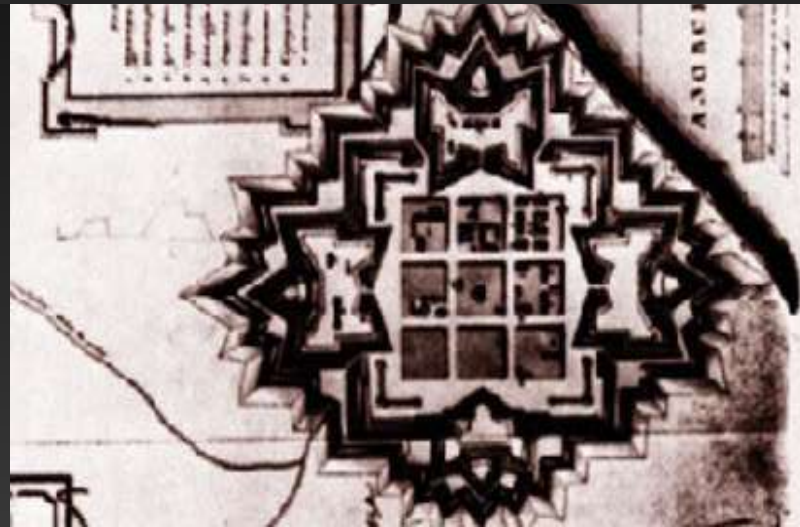


PETRIVSKA FORTRESS

46.81281811890759,
36.899964169682036

Plan

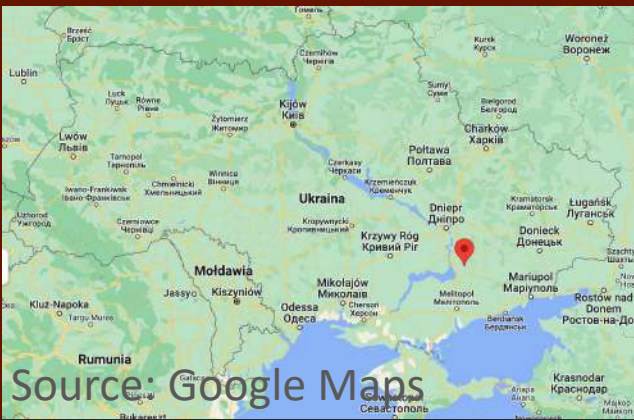
Source: Wiki



Photos



с/www.youtube.com/user/dombrovski



Source: Google Maps

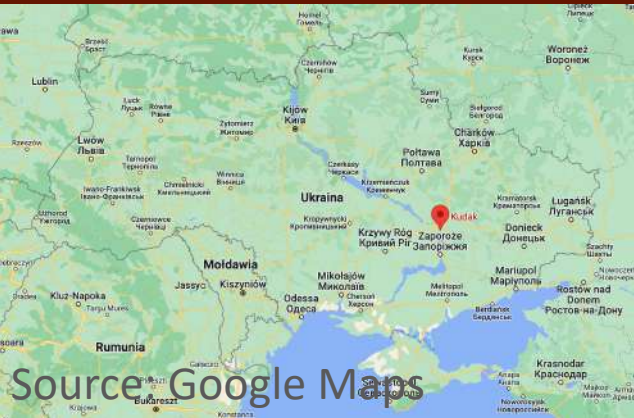
47.69988825455216,
35.58166669831432

NYKYTYNSKA FORTRESS

Plan



Photos



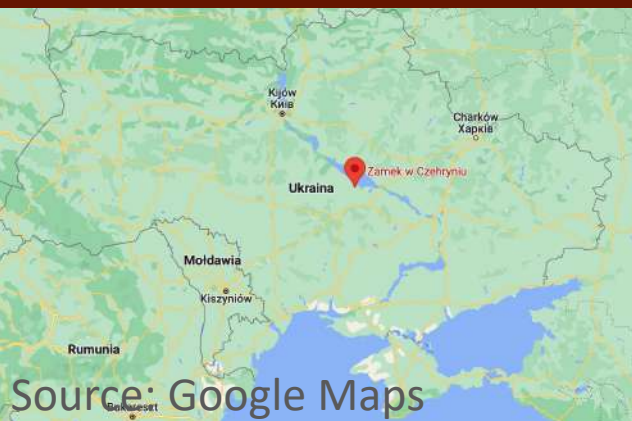
48.38349362978002,
35.13905354232974

Kudak Fortress (Dnipropetrovsk Region)

Source:
https://www.tripadvisor.com/Locati onPhotoDirectLink-g298045-d6765882-f282616653-Kodak_Fortress-Dnipro_Dnipropetrovsk_Oblast.html



Photos



Source: Google Maps

49.07947771251979,
32.65858904695611

Chyhyryn Fortress (Cherkasy Region)

Plan

Source: <https://forum.zamki-kreposti.com.ua/topic/965-/>

