

“De Fronten” in Maastricht:

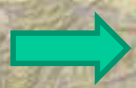
an innovative program on spatial
development, tourism and heritage
protection

Gilbert Soeters & Wijnand de Radder





Maastricht



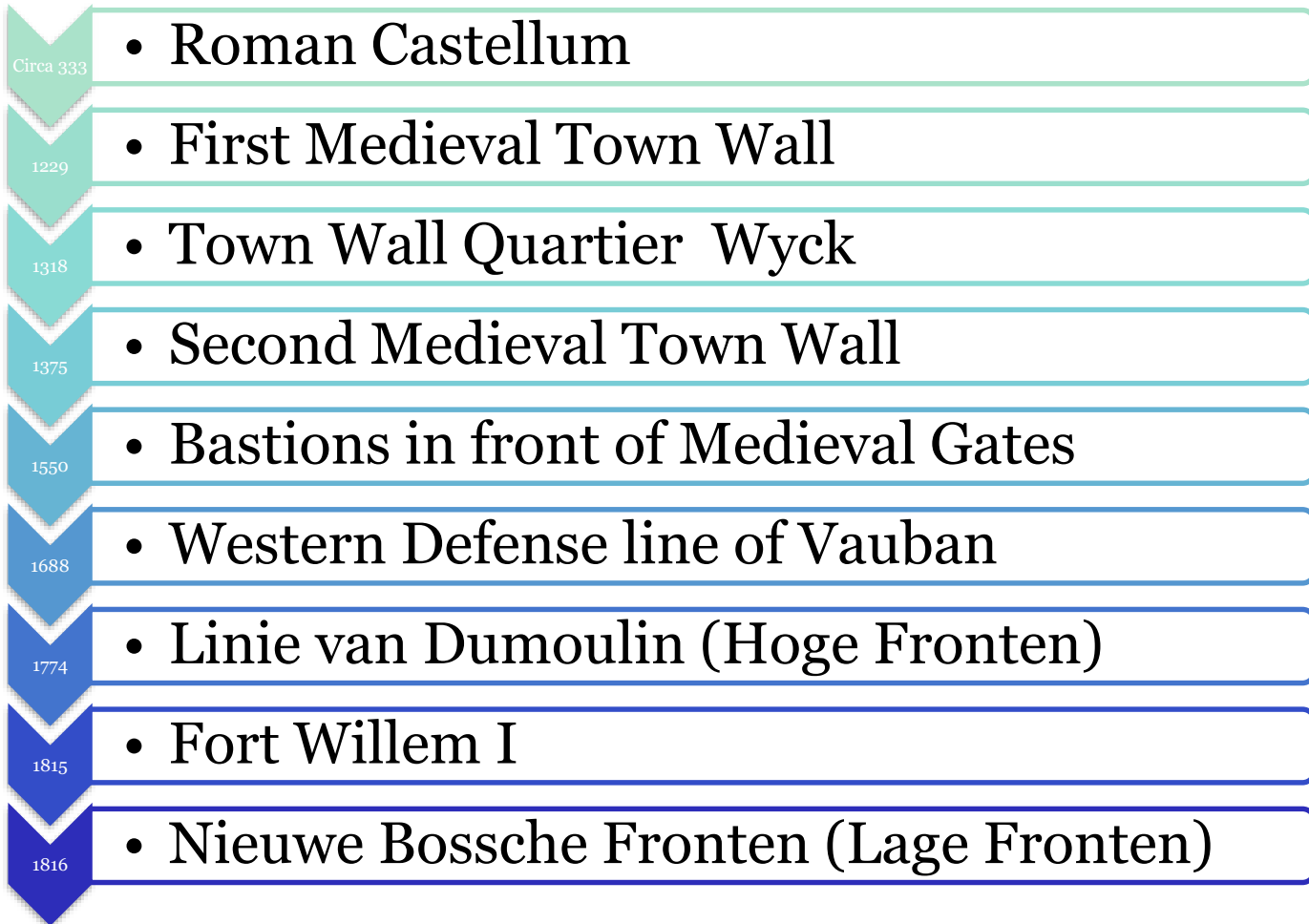
Gemeente Maastricht

Fortifications of Maastricht

- *A time depth from Roman times upto the Cold War*
- *Remains of these fortifications above and underground*
- *A sampling of military history*



Timetable



Two medieval town walls

- *From the first medieval wall large pieces still exist in the historical centre*
- *The second wall is the decor of the parcs constructed in the 19th century*



Hoge and Lage Fronten

- *De Hoge Fronten on the higher parts of the city; the “dry” part of our fortifications*
- *De Lage Fronten on the northern part of town; a “wet” part with moats filled with water from an aquaduct*



Fortresses

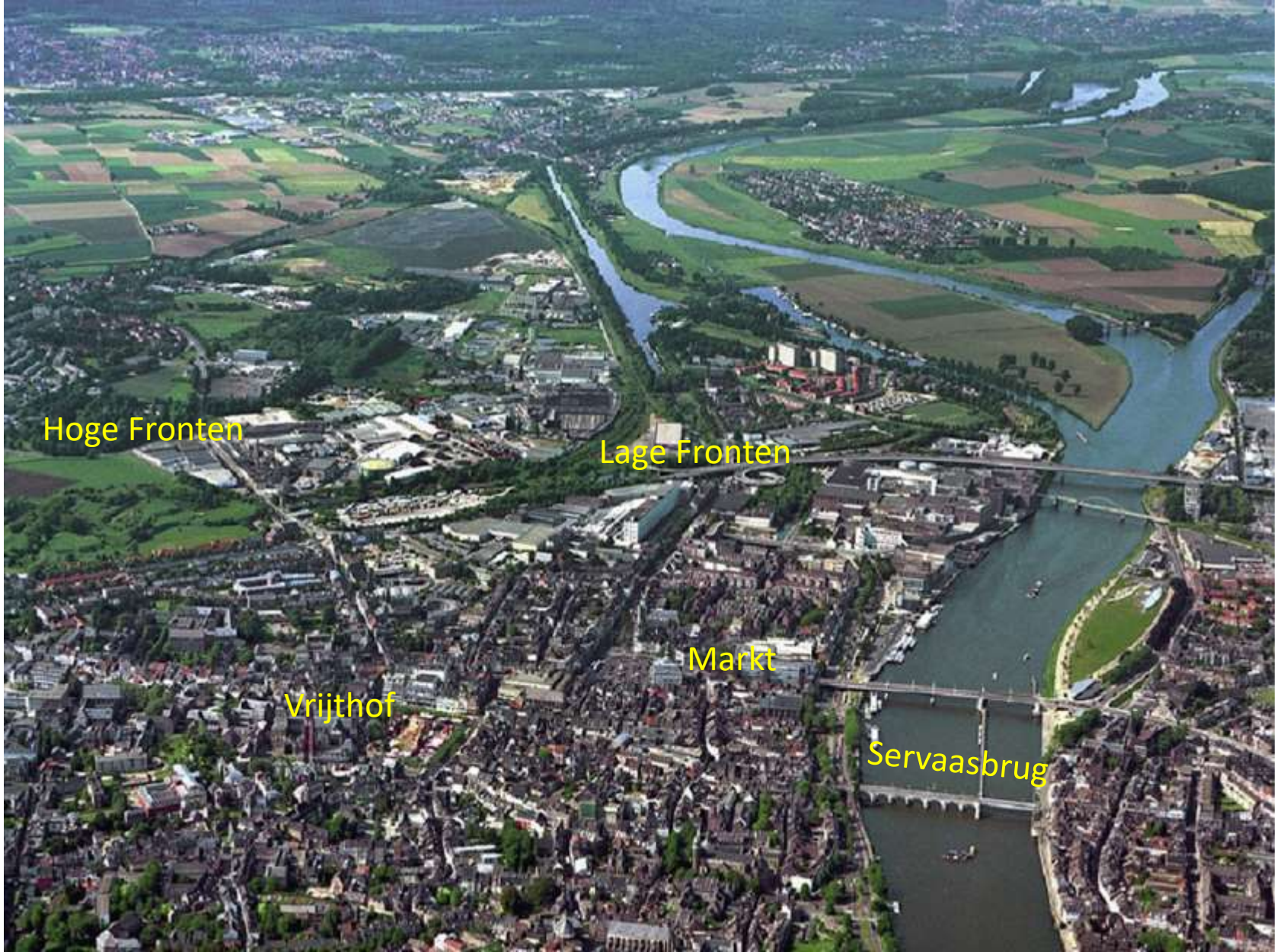
- *Fort Sint Pieter was build in 1702 on the northern hillside of the Pietersberg*
- *Fort Willem, west of de Hoge Fronten, build in 1815 under the reign of King William I*



Vestingvisie 2010-2025

- *A product of several stakeholders: Municipality of Maastricht; Stichting Maastricht Vestingstad; Stichting Menno van Coehoorn; Natuurmonumenten; VVM Maastricht; Centrum voor Natuur & Milieu Educatie*
- *Sustainable, pro-active and inspirational*
- *To manage, to experience, to give meaning to*







Gemeente Maastricht



Gemeente Maastricht



Gemeente Maastricht

to manage

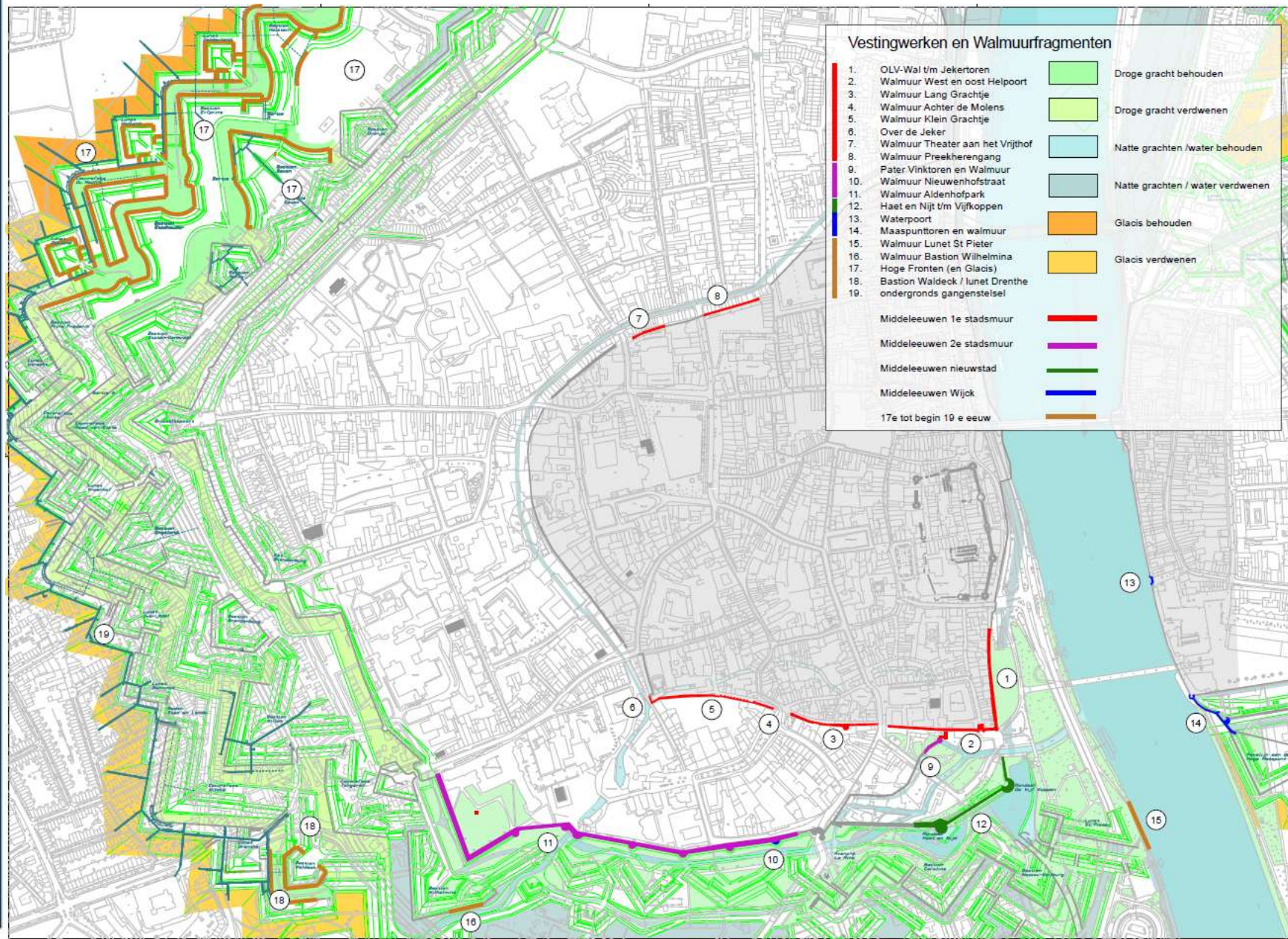
- *Regular maintenance, to stop erosion caused by plants, vandalism and weather conditions*
- *Restoration - & consolidation projects: new employment*







Gemeente Maastricht



Hoge Fronten

- *“the garden” of Maastricht*
- *2,5 km fortress walls*
- *Complex Flora / Fauna facilities*
- *In 1992 only 20 wall lizards*
- *Marlstone / masonry / freestone consolidations*
- *Bring back soil profiles*



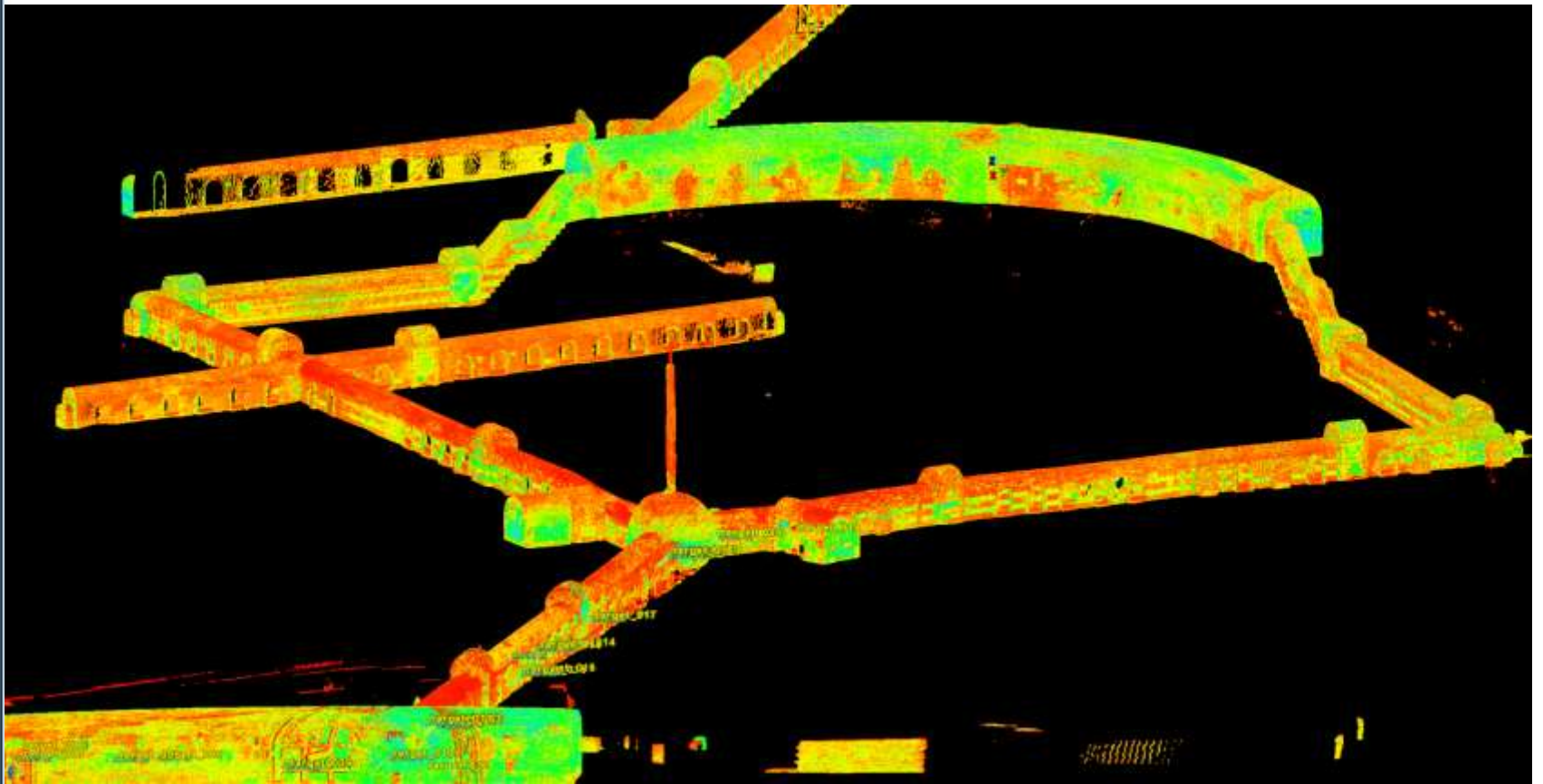
The underground casemate (11km)

- *The 'cellar' of Maastricht*
- *more than 11km of underground casemates under the city of Maastricht*
- *Guided tours*
- *Safety and structural decay*
- *Action plan: 3D scans and research*

Tip View 3D tour yourself? Tap on

Youtube: [Virtual Reality: Couvreface du Moulin 3d scan pilot](#)





Tip View 3D tour yourself? Tap on Youtube:

Virtual Reality: Couvreface du Moulin 3d scan pilot



Gemeente Maastricht



Conclusions:

- *Fortifications can play a big role in the spatial development of certain areas*
- *New spatial developments make it possible to start restoration- and consolidation projects of the fortifications; chances for new employment*
- *Innovative techniques like Laser 3D scanning give us the opportunity to monitor erosion but also gives us the possibility to use it for immersive storytelling*
- *All aspects of an area have to be considered to construct a sustainable program for tourism and heritage management; a joint-venture for all stakeholders*





Thank you for your attention and we gladly welcome you in Maastricht

gilbert.soeters@maastricht.nl

wijnand.de.radder@maastricht.nl



Gemeente Maastricht